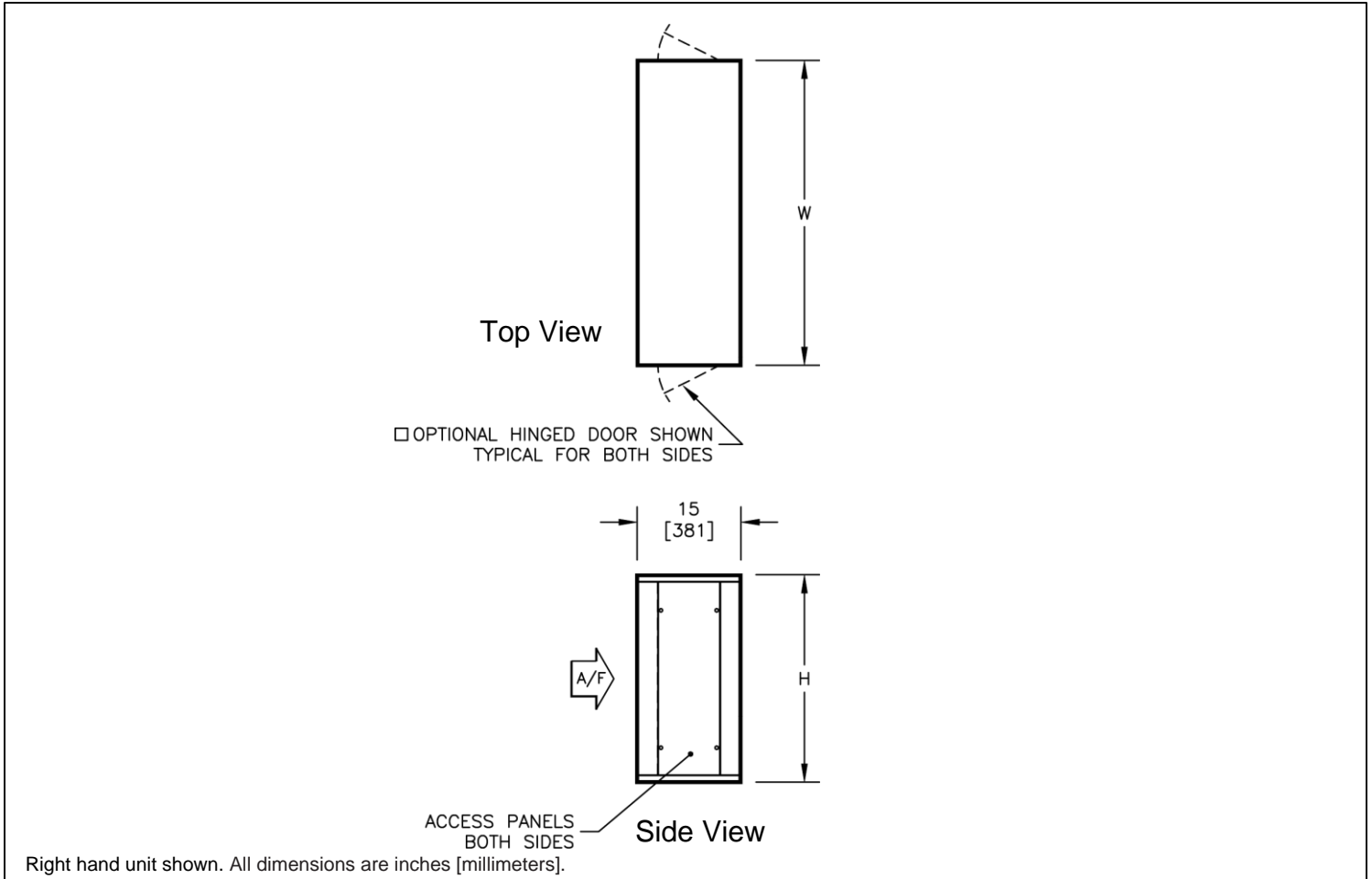


SAM

Small Access Module



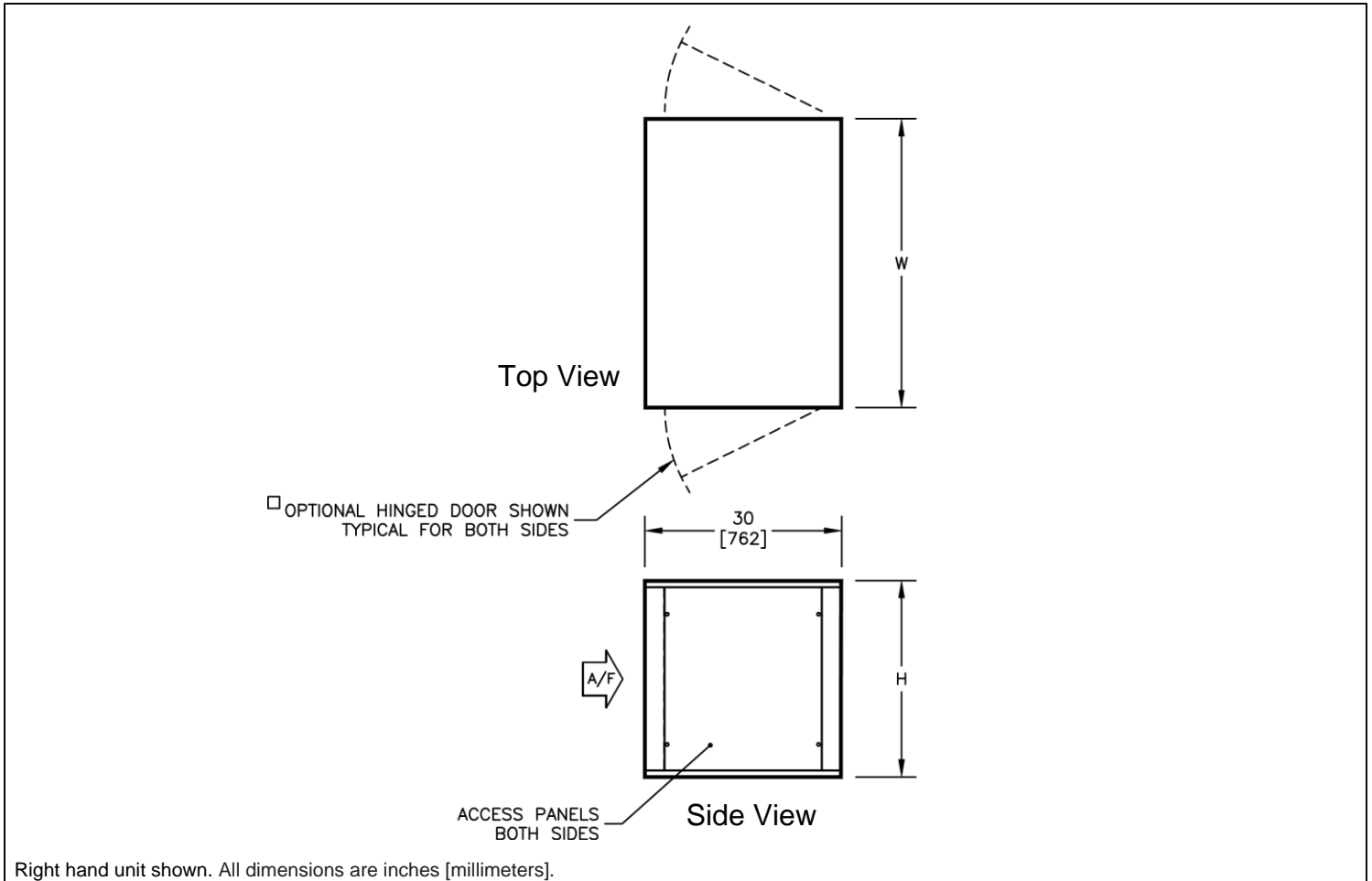
Unit Size	H	W	ACCESS PANEL H X W	WEIGHT	
				SINGLE WALL lbs [kg]	DOUBLE WALL lbs [kg]
02	22 [559]	30 [762]	20x9 [508x229]	40 [18]	55 [25]
03	22 [559]	36 [914]	20x9 [508x229]	45 [20]	60 [27]
04	22 [559]	44 [1118]	20x9 [508x229]	50 [23]	65 [30]
06	30 [762]	44 [1118]	28x9 [711x229]	55 [25]	75 [34]
08	34 [864]	48 [1219]	32x9 [813x229]	60 [27]	80 [36]
10	34 [864]	58 [1473]	32x9 [813x229]	65 [30]	90 [41]
12	44 [1118]	66 [1676]	42x9 [1067x229]	75 [34]	105 [48]
14	44 [1118]	70 [1778]	42x9 [1067x229]	80 [36]	110 [50]
17	44 [1118]	82 [2083]	42x9 [1067x229]	90 [41]	120 [46]

Notes:

- Optional hinged door is removable, but must be opened 90° for removal.

MAM

Medium Access Module



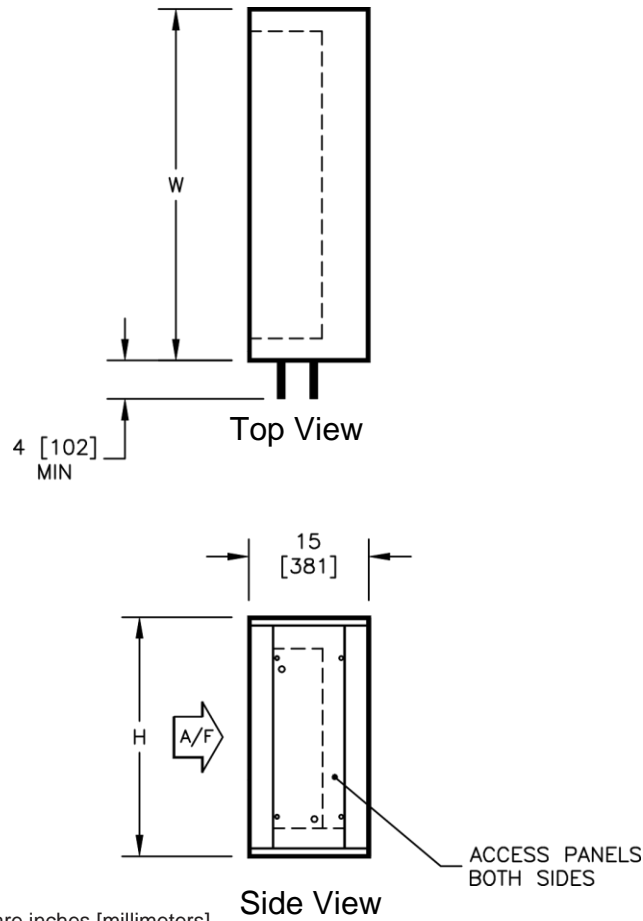
Unit Size	H	W	ACCESS PANEL H X W	WEIGHT	
				SINGLE WALL lbs [kg]	DOUBLE WALL lbs [kg]
02	22 [559]	30 [762]	20x24 [508x610]	75 [34]	100 [45]
03	22 [559]	36 [914]	20x24 [508x610]	80 [36]	110 [50]
04	22 [559]	44 [1118]	20x24 [508x610]	85 [39]	120 [55]
06	30 [762]	44 [1118]	28x24 [711x610]	95 [43]	135 [61]
08	34 [864]	48 [1219]	32x24 [813x610]	100 [45]	145 [66]
10	34 [864]	58 [1473]	32x24 [813x610]	110 [50]	160 [73]
12	44 [1118]	66 [1676]	42x24 [1067x610]	130 [59]	190 [86]
14	44 [1118]	70 [1778]	42x24 [1067x610]	145 [66]	205 [93]
17	44 [1118]	82 [2083]	42x24 [1067x610]	155 [70]	210 [95]

Notes:

- Optional hinged door is removable, but must be opened 90° for removal.

SCM

Small Coil Module



Right hand unit shown. All dimensions are inches [millimeters].

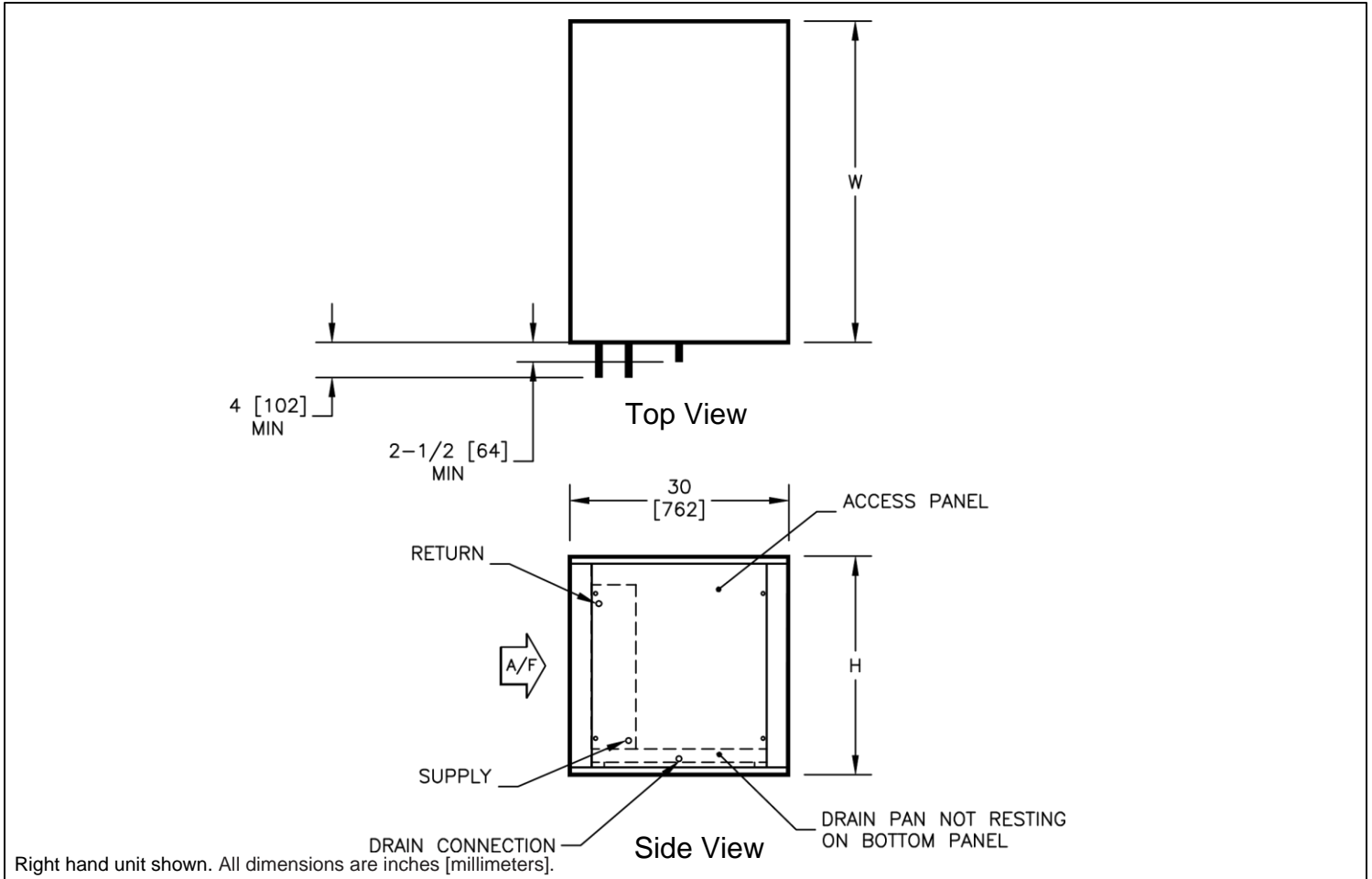
Unit Size	H	W	ACCESS PANEL H X W	WEIGHT	
				SINGLE WALL lbs [kg]	DOUBLE WALL lbs [kg]
02	22 [559]	30 [762]	20x9 [508x229]	42 [19]	57 [26]
03	22 [559]	36 [914]	20x9 [508x229]	47 [21]	62 [28]
04	22 [559]	44 [1118]	20x9 [508x229]	52 [24]	67 [30]
06	30 [762]	44 [1118]	28x9 [711x229]	58 [26]	78 [35]
08	34 [864]	48 [1219]	32x9 [813x229]	63 [29]	83 [38]
10	34 [864]	58 [1473]	32x9 [813x229]	68 [31]	93 [42]
12	44 [1118]	66 [1676]	42x9 [1067x229]	79 [36]	109 [49]
14	44 [1118]	70 [1778]	42x9 [1067x229]	84 [38]	114 [52]
17	44 [1118]	82 [2083]	42x9 [1067x229]	94 [43]	124 [56]

Notes:

1. Coil connections specified left or right with air to back.

MCM

Medium Coil Module



Unit Size	H	W	ACCESS PANEL H X W	WEIGHT	
				SINGLE WALL lbs [kg]	DOUBLE WALL lbs [kg]
02	22 [559]	30 [762]	20x24 [508x610]	75 [34]	100 [45]
03	22 [559]	36 [914]	20x24 [508x610]	80 [36]	110 [50]
04	22 [559]	44 [1118]	20x24 [508x610]	85 [39]	120 [55]
06	30 [762]	44 [1118]	28x24 [711x610]	95 [43]	135 [61]
08	34 [864]	48 [1219]	32x24 [813x610]	100 [45]	145 [66]
10	34 [864]	58 [1473]	32x24 [813x610]	110 [50]	160 [73]
12	44 [1118]	66 [1676]	42x24 [1067x610]	130 [59]	190 [86]
14	44 [1118]	70 [1778]	42x24 [1067x610]	145 [66]	205 [93]
17	44 [1118]	82 [2083]	42x24 [1067x610]	155 [70]	210 [95]

Notes:

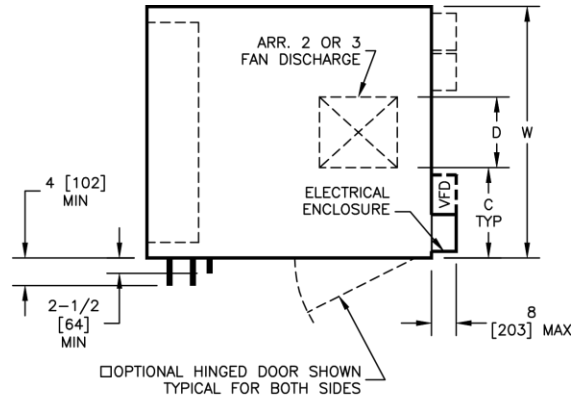
1. Coil and drain connections specified left or right with air to back.
2. Panel with coil connection penetrations is not removable. Panel opposite coil connection is removable.
3. One coil shown. Two coil available.

FCM

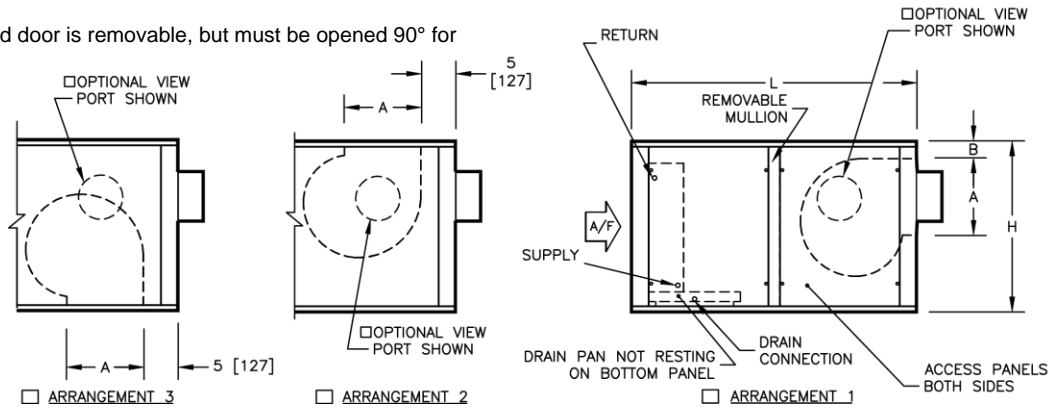
FC Fan and Coil Combination Module

Notes:

1. Motor/drive location specified left or right with air to back. Standard control enclosure location matches motor/drive position.
2. Panel with coil connection penetrations is not removable. Panel opposite coil connection is removable.
3. Weight does not include motor weight.
4. Coil and drain connections specified left or right with air to back.
5. One coil shown. Two coils available.
6. Control enclosure will be mounted on supply fan module.
7. Alternate control enclosure and VFD locations are subjected to compliance with NEC 2002 Article 110.26 and are limited. Consult Titus for available alternate location by application .
8. Optional VFD will be located on the same side of the unit as control enclosure. VFD shall be mounted adjacent to or close to control enclosure as possible, depending upon unit size.
9. A) Optional viewport is available with double wall option.
B) Optional viewport is 8" diameter, double pane, clear polycarbonate, UV Resistant, with both interior and exterior gasketing.
10. Optional hinged door is removable, but must be opened 90° for removal .



Top View



Side View

Right hand unit shown. All dimensions are inches [millimeters].

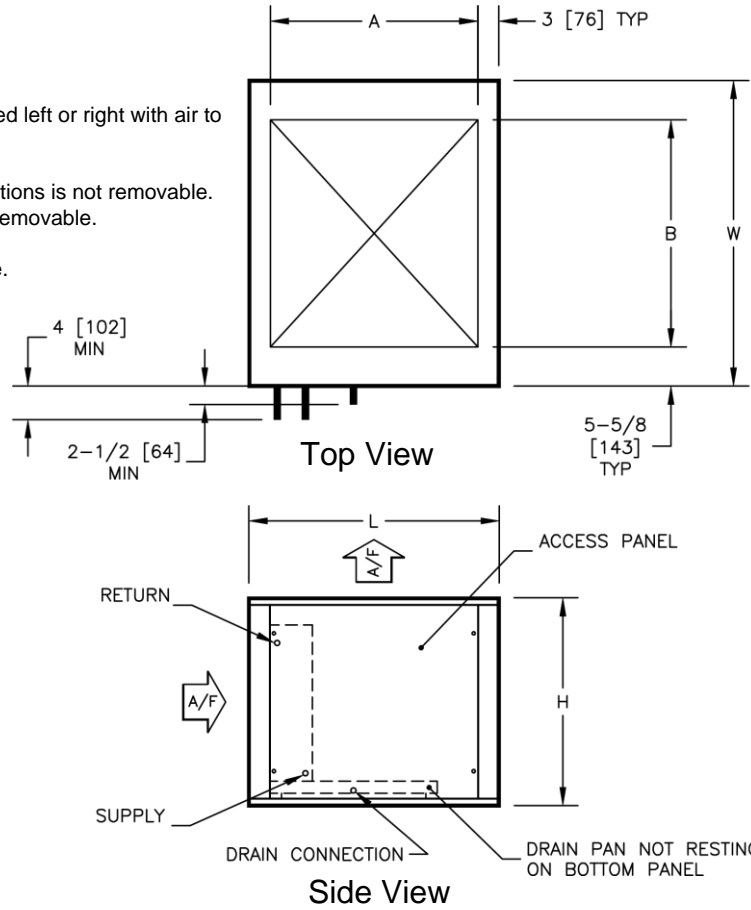
Unit Size	H	W	L	A	B	C	D	ACCESS PANEL H X W	WEIGHT	
									SINGLE WALL lbs [kg]	DOUBLE WALL lbs [kg]
02	22 [559]	30 [762]	46 [1168]	10 1/2 [267]	2 3/8 [603]	11 7/16 [291]	7 1/8 [181]	20x19 [508x483]	160 [73]	205 [93]
03	22 [559]	36 [914]	46 [1168]	10 1/2 [267]	2 3/8 [603]	13 3/4 [349]	8 1/2 [216]	20x19 [508x483]	170 [77]	220 [100]
04	22 [559]	44 [1118]	46 [1168]	11 5/8 [295]	2 3/8 [603]	17 1/16 [433]	9 7/8 [251]	20x19 [508x483]	185 [84]	245 [111]
06	30 [762]	44 [1118]	50 [1270]	13 3/4 [349]	3 [76]	15 3/4 [400]	12 1/2 [318]	28x21 [711x533]	220 [100]	295 [134]
08	34 [864]	48 [1219]	50 [1270]	13 3/4 [349]	3 [76]	16 1/16 [408]	15 7/8 [403]	32x21 [813x533]	235 [107]	320 [145]
10	34 [864]	58 [1473]	50 [1270]	16 1/8 [410]	3 3/8 [86]	21 9/16 [548]	14 7/8 [378]	32x21 [813x533]	285 [130]	380 [173]
12	44 [1118]	66 [1676]	53 [1346]	19 1/8 [486]	8 [203]	24 3/16 [614]	17 5/8 [448]	42x22 1/2 [1067x572]	365 [166]	475 [216]
14	44 [1118]	70 [1778]	53 [1346]	19 1/8 [486]	8 [203]	23 15/16 [608]	22 1/8 [562]	42x22 1/2 [1067x572]	375 [170]	490 [223]
17	44 [1118]	82 [2083]	53 [1346]	19 1/8 [486]	8 [203]	29 15/16 [760]	22 1/8 [562]	42x22 1/2 [1067x572]	400 [182]	545 [248]

VCM

Vertical Coil Module

Notes:

1. Coil and drain connections specified left or right with air to back.
2. Panel with coil connection penetrations is not removable. Panel opposite coil connection is removable.
3. One coil shown. Two coil available.



Right hand unit shown. All dimensions are inches [millimeters].

Unit Size	H	W	L	A	B	ACCESS PANEL H X W	WEIGHT	
							SINGLE WALL lbs [kg]	DOUBLE WALL lbs [kg]
02	22 [559]	30 [762]	32 [813]	26 [660]	18 3/4 [476]	20x26 [508x660]	100 [45]	130 [59]
03	22 [559]	36 [914]	32 [813]	26 [660]	24 3/4 [629]	20x26 [508x660]	115 [52]	145 [66]
04	22 [559]	44 [1118]	32 [813]	26 [660]	32 3/4 [832]	20x26 [508x660]	125 [57]	155 [70]
06	30 [762]	44 [1118]	36 [914]	30 [762]	32 3/4 [832]	28x30 [711x762]	150 [68]	195 [89]
08	34 [864]	48 [1219]	36 [914]	30 [762]	36 3/4 [933]	32x30 [813x762]	165 [75]	220 [100]
10	34 [864]	58 [1473]	36 [914]	30 [762]	46 3/4 [1187]	32x30 [813x762]	190 [86]	245 [111]
12	44 [1118]	66 [1676]	40 [1016]	34 [864]	54 3/4 [1391]	42x34 [1067x864]	235 [107]	315 [143]
14	44 [1118]	70 [1778]	40 [1016]	34 [864]	58 3/4 [1492]	42x34 [1067x864]	245 [111]	325 [148]
17	44 [1118]	82 [2083]	40 [1016]	34 [864]	70 3/4 [1797]	42x34 [1067x864]	270 [123]	355 [161]

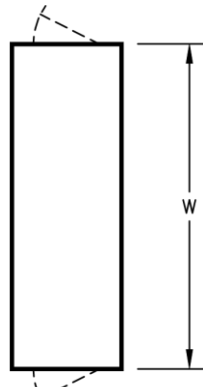
SFM

Small Flat Filters Module

Notes:

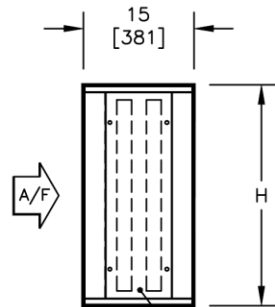
1. Optional hinged door is removable, but must be opened 90° for removal.

Available Filter Options:	MERV Rating
<input type="checkbox"/> A. 2" [51mm] 30% pleated.	8
<input type="checkbox"/> B. 4" [102mm], 65% pleated.	10
<input type="checkbox"/> C. 2" [51mm], 30% pleated and 4" [102mm], 85% pleated.	7 13
<input type="checkbox"/> D. 2" [51mm], 30% pleated and 4" [102mm], 95% pleated.	8 15



Top View

OPTIONAL HINGED DOOR SHOWN
TYPICAL FOR BOTH SIDES



Side View

ACCESS PANEL
BOTH SIDES

Right hand unit shown. All dimensions are inches [millimeters].

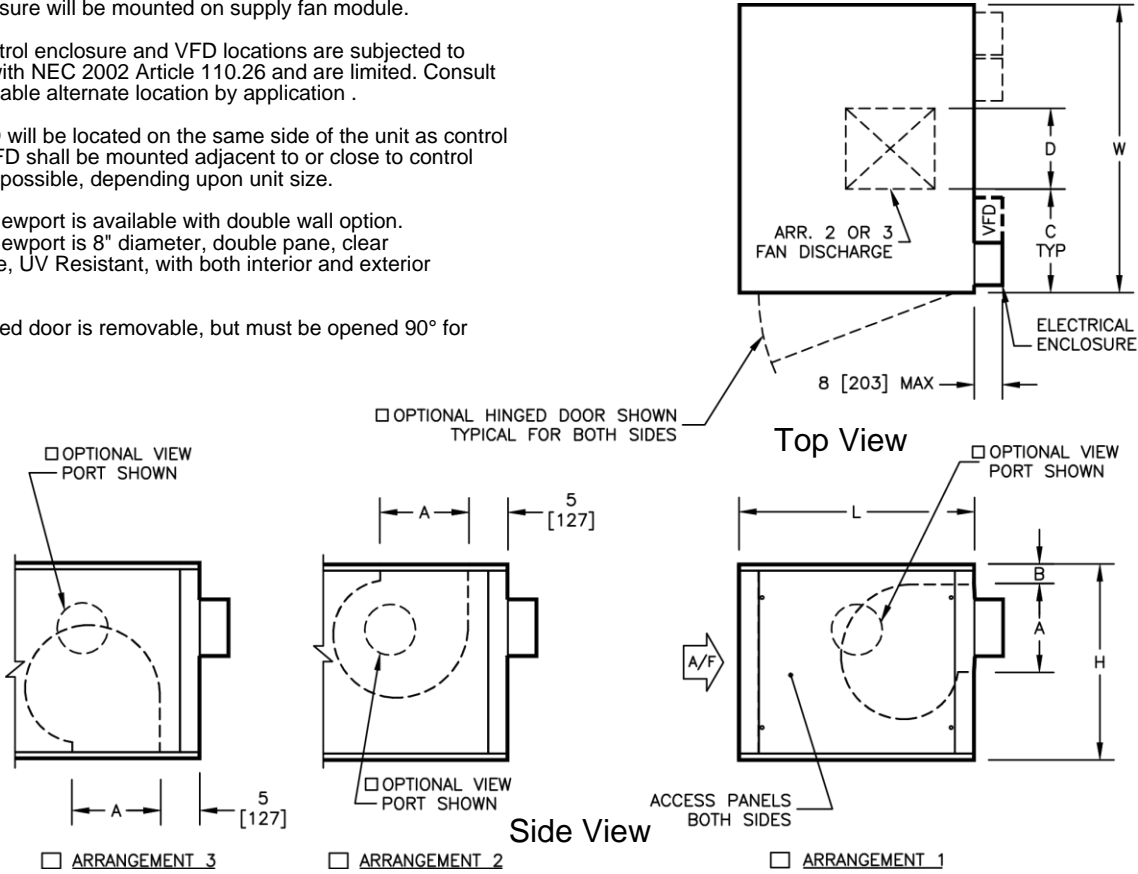
Unit Size	H	W	ACCESS PANEL H X W	WEIGHT		FILTER SIZES	
				SINGLE WALL lbs [kg]	DOUBLE WALL lbs [kg]	2 [51]	4 [102]
02	22 [559]	30 [762]	20x9 [508x229]	65 [30]	75 [34]	(1) 16x20 [406x508]	(1) 16x20 [406x508]
03	22 [559]	36 [914]	20x9 [508x229]	70 [32]	80 [36]	(1) 16x25 [406x635]	(1) 16x25 [406x635]
04	22 [559]	44 [1118]	20x9 [508x229]	75 [34]	90 [41]	(2) 16x20 [406x508]	(2) 16x20 [406x508]
06	30 [762]	44 [1118]	28x9 [711x229]	80 [36]	100 [45]	(2) 20x25 [508x635]	(2) 20x25 [508x635]
08	34 [864]	48 [1219]	32x9 [813x229]	95 [43]	115 [52]	(2) 20x25 [508x635]	(2) 20x25 [508x635]
10	34 [864]	58 [1473]	32x9 [813x229]	105 [48]	130 [59]	(1) 16x25 (2) 20x25 [406x635] [508x635]	(1) 16x25 (2) 20x25 [406x635] [508x635]
12	44 [1118]	66 [1676]	42x9 [1067x229]	160 [73]	190 [86]	(4) 20x25 [508x635]	(4) 20x25 [508x635]
14	44 [1118]	70 [1778]	42x9 [1067x229]	170 [77]	200 [91]	(8) 16x20 [406x508]	(8) 16x20 [406x508]
17	44 [1118]	82 [2083]	42x9 [1067x229]	185 [84]	215 [98]	(6) 20x25 [508x635]	(6) 20x25 [508x635]

HFM

Horizontal FC Fan Module

Notes:

1. Motor/drive location specified left or right with air to back. Standard control enclosure location matches motor/drive position.
2. Weight does not include motor weight.
3. Control enclosure will be mounted on supply fan module.
4. Alternate control enclosure and VFD locations are subjected to compliance with NEC 2002 Article 110.26 and are limited. Consult Titus for available alternate location by application .
5. Optional VFD will be located on the same side of the unit as control enclosure. VFD shall be mounted adjacent to or close to control enclosure as possible, depending upon unit size.
6. A) Optional viewport is available with double wall option.
B) Optional viewport is 8" diameter, double pane, clear polycarbonate, UV Resistant, with both interior and exterior gasketing.
7. Optional hinged door is removable, but must be opened 90° for removal .



Right hand unit shown. All dimensions are inches [millimeters].

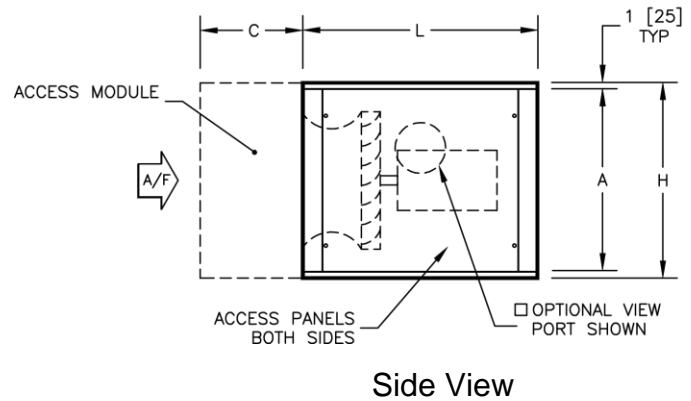
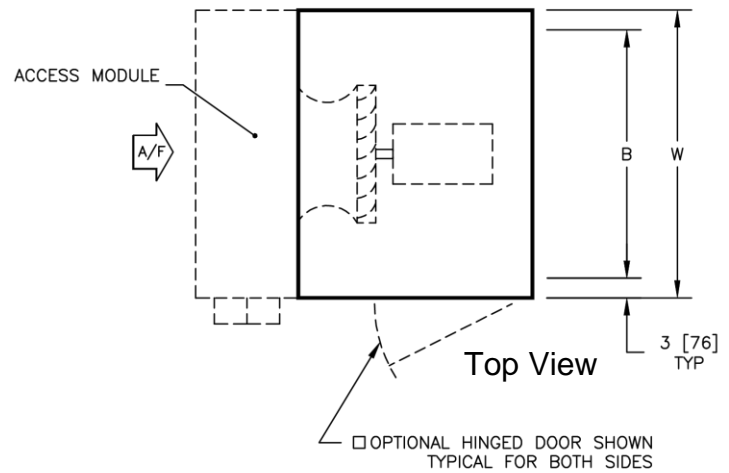
Unit Size	H	W	L	A	B	C	D	ACCESS PANEL H X W	WEIGHT	
									SINGLE WALL lbs [kg]	DOUBLE WALL lbs [kg]
02	22 [559]	30 [762]	32 [813]	10 1/2 [267]	2 3/8 [603]	11 7/16 [291]	7 1/8 [181]	20x26 [508x660]	110 [50]	140 [64]
03	22 [559]	36 [914]	32 [813]	10 1/2 [267]	2 3/8 [603]	13 3/4 [349]	8 1/2 [216]	20x26 [508x660]	125 [57]	155 [70]
04	22 [559]	44 [1118]	32 [813]	11 5/8 [295]	2 3/8 [603]	17 1/16 [433]	9 7/8 [251]	20x26 [508x660]	140 [64]	170 [77]
06	30 [762]	44 [1118]	36 [914]	13 3/4 [349]	3 [76]	15 3/4 [400]	12 1/2 [318]	28x30 [711x762]	185 [84]	230 [105]
08	34 [864]	48 [1219]	36 [914]	13 3/4 [349]	3 [76]	16 1/16 [408]	15 7/8 [403]	32x30 [813x762]	215 [98]	270 [123]
10	34 [864]	58 [1473]	36 [914]	16 1/8 [410]	3 3/8 [86]	21 9/16 [548]	14 7/8 [378]	32x30 [813x762]	255 [116]	310 [141]
12	44 [1118]	66 [1676]	40 [1016]	19 1/8 [486]	8 [203]	24 3/16 [614]	17 5/8 [448]	42x34 [1067x864]	310 [141]	390 [177]
14	44 [1118]	70 [1778]	40 [1016]	19 1/8 [486]	8 [203]	23 15/16 [608]	22 1/8 [562]	42x34 [1067x864]	325 [148]	405 [184]
17	44 [1118]	82 [2083]	40 [1016]	19 1/8 [486]	8 [203]	29 15/16 [760]	22 1/8 [562]	42x34 [1067x864]	370 [168]	470 [214]

HPM

Horizontal Plug Fan Module

Notes:

1. Weight does not include motor weight.
2. Panel with control enclosure is not removable or hinged.
3. VFD will be located on the same side of the unit as control enclosure. VFD shall be mounted adjacent to or close to control enclosure as possible, depending upon unit size.
4. Fan and motor access available on either side .
5. To ensure proper fan performance, an access module is required upstream of the plug fan.
6. A) Optional viewport is available with double wall option.
B) Optional viewport is 8" diameter, double pane, clear polycarbonate, UV Resistant, with both interior and exterior gasketing.
7. Optional hinged door is removable, but must be opened 90° for removal .



Right hand unit shown. All dimensions are inches [millimeters].

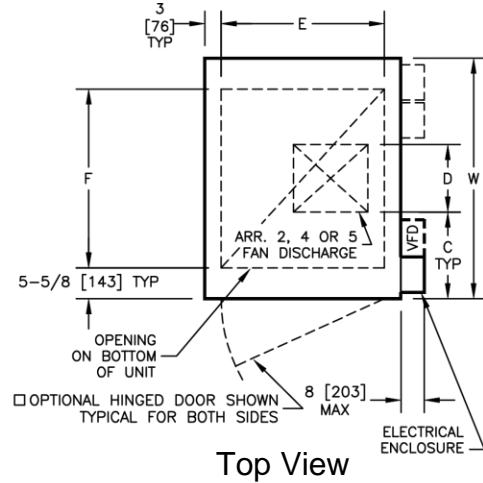
Unit Size	H	W	L	LEAVING AIR OPENING		MIN. REQUIRED ACCESS MODULE	ACCESS PANEL H X W	WEIGHT	
				A	B	C		SINGLE WALL lbs [kg]	DOUBLE WALL lbs [kg]
02	22 [559]	30 [762]	32 [813]	20 [508]	24 [610]	15 [381]	20x26 [508x660]	120 [54]	150 [68]
03	22 [559]	36 [914]	32 [813]	20 [508]	30 [762]	15 [381]	20x26 [508x660]	135 [61]	165 [74]
04	22 [559]	44 [1118]	32 [813]	20 [508]	38 [965]	15 [381]	20x26 [508x660]	150 [68]	180 [81]
06	30 [762]	44 [1118]	36 [914]	28 [711]	38 [965]	15 [381]	28x30 [711x762]	180 [81]	225 [101]
08	34 [864]	48 [1219]	36 [914]	32 [813]	42 [1067]	30 [762]	32x30 [813x762]	200 [90]	255 [115]
10	34 [864]	58 [1473]	36 [914]	32 [813]	52 [1321]	30 [762]	32x30 [813x762]	225 [101]	280 [126]
12	44 [1118]	66 [1676]	40 [1016]	42 [1067]	60 [1524]	30 [762]	42x34 [1067x864]	265 [119]	345 [155]
14	44 [1118]	70 [1778]	40 [1016]	42 [1067]	64 [1626]	30 [762]	42x34 [1067x864]	275 [124]	355 [160]
17	44 [1118]	82 [2083]	40 [1016]	42 [1067]	76 [1930]	30 [762]	42x34 [1067x864]	290 [131]	390 [176]

VFM

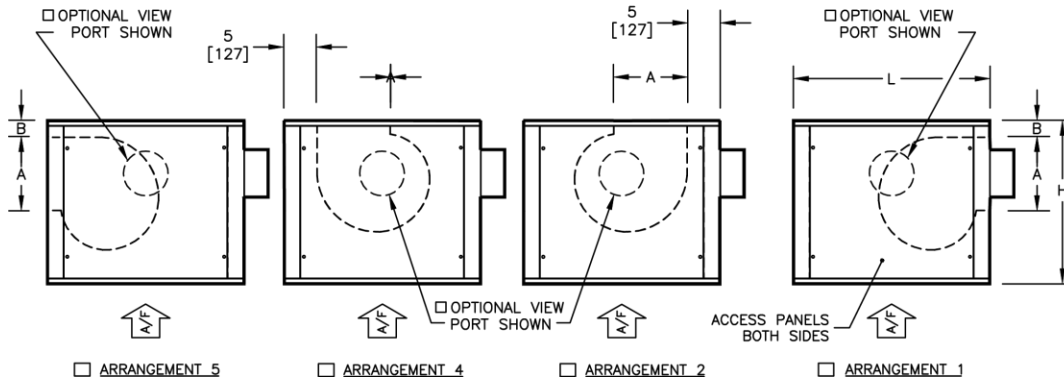
Vertical FC Fan Module

Notes:

1. Motor/drive location specified left or right with air to back. Standard control enclosure location matches motor/drive position.
2. Weight does not include motor weight.
3. Control enclosure will be mounted on supply fan module.
4. Alternate control enclosure and VFD locations are subjected to compliance with NEC 2002 Article 110.26 and are limited. Consult Titus for available alternate location by application .
5. Optional VFD will be located on the same side of the unit as control enclosure. VFD shall be mounted adjacent to or close to control enclosure as possible, depending upon unit size.
6. A) Optional viewport is available with double wall option.
B) Optional viewport is 8" diameter, double pane, clear polycarbonate, UV Resistant, with both interior and exterior gasketing.
7. Optional hinged door is removable, but must be opened 90° for removal .



Top View



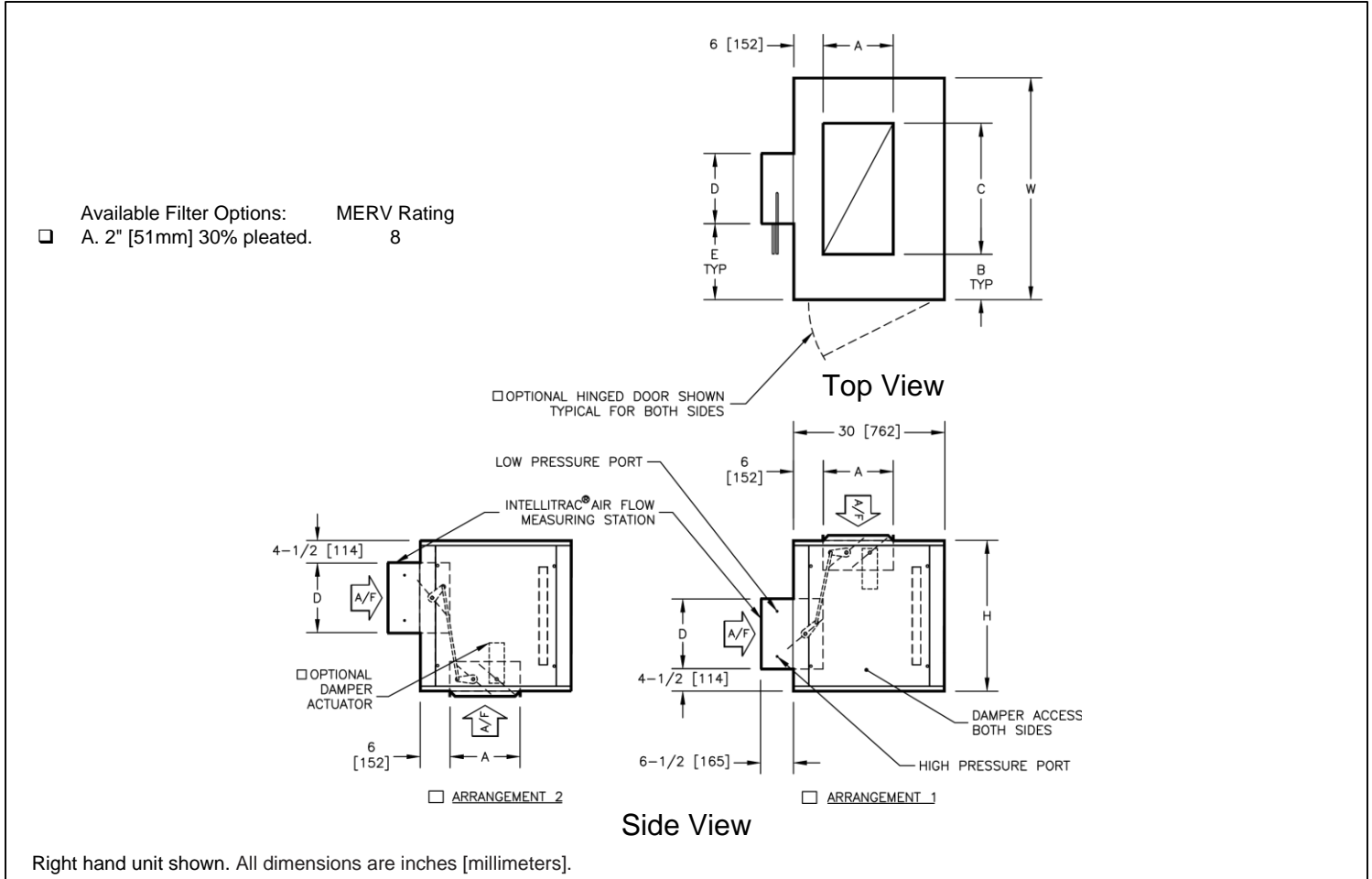
Side View

Right hand unit shown. All dimensions are inches [millimeters].

Unit Size	H	W	L	A	B	C	D	E	F	ACCESS PANEL H X W	WEIGHT	
											SINGLE WALL lbs [kg]	DOUBLE WALL lbs [kg]
02	22 [559]	30 [762]	32 [813]	10 1/2 [267]	2 3/8 [603]	11 7/16 [291]	7 1/8 [181]	26 [660]	18 3/4 [476]	20x26 [508x660]	105 [48]	135 [61]
03	22 [559]	36 [914]	32 [813]	10 1/2 [267]	2 3/8 [603]	13 3/4 [349]	8 1/2 [216]	26 [660]	24 3/4 [629]	20x26 [508x660]	120 [55]	150 [68]
04	22 [559]	44 [1118]	32 [813]	11 5/8 [295]	2 3/8 [603]	17 1/16 [433]	9 7/8 [251]	26 [660]	32 3/4 [832]	20x26 [508x660]	135 [61]	165 [75]
06	30 [762]	44 [1118]	36 [914]	13 3/4 [349]	3 [76]	15 3/4 [400]	12 1/2 [318]	30 [762]	32 3/4 [832]	28x30 [711x762]	175 [80]	220 [100]
08	34 [864]	48 [1219]	36 [914]	13 3/4 [349]	3 [76]	16 1/16 [408]	15 7/8 [403]	30 [762]	36 3/4 [933]	32x30 [813x762]	205 [93]	260 [118]
10	34 [864]	58 [1473]	36 [914]	16 1/8 [410]	3 3/8 [86]	21 9/16 [548]	14 7/8 [378]	30 [762]	46 3/4 [1187]	32x30 [813x762]	235 [107]	290 [132]
12	44 [1118]	66 [1676]	40 [1016]	19 1/8 [486]	8 [203]	24 3/16 [614]	17 5/8 [448]	34 [864]	54 3/4 [1391]	42x34 [1067x864]	295 [134]	375 [170]
14	44 [1118]	70 [1778]	40 [1016]	19 1/8 [486]	8 [203]	23 15/16 [608]	22 1/8 [562]	34 [864]	58 3/4 [1492]	42x34 [1067x864]	310 [141]	390 [177]
17	44 [1118]	82 [2083]	40 [1016]	19 1/8 [486]	8 [203]	29 15/16 [760]	22 1/8 [562]	34 [864]	70 3/4 [1797]	42x34 [1067x864]	370 [168]	455 [209]

MFM

Medium Flowstar Mixing Box with Flat Filters Module



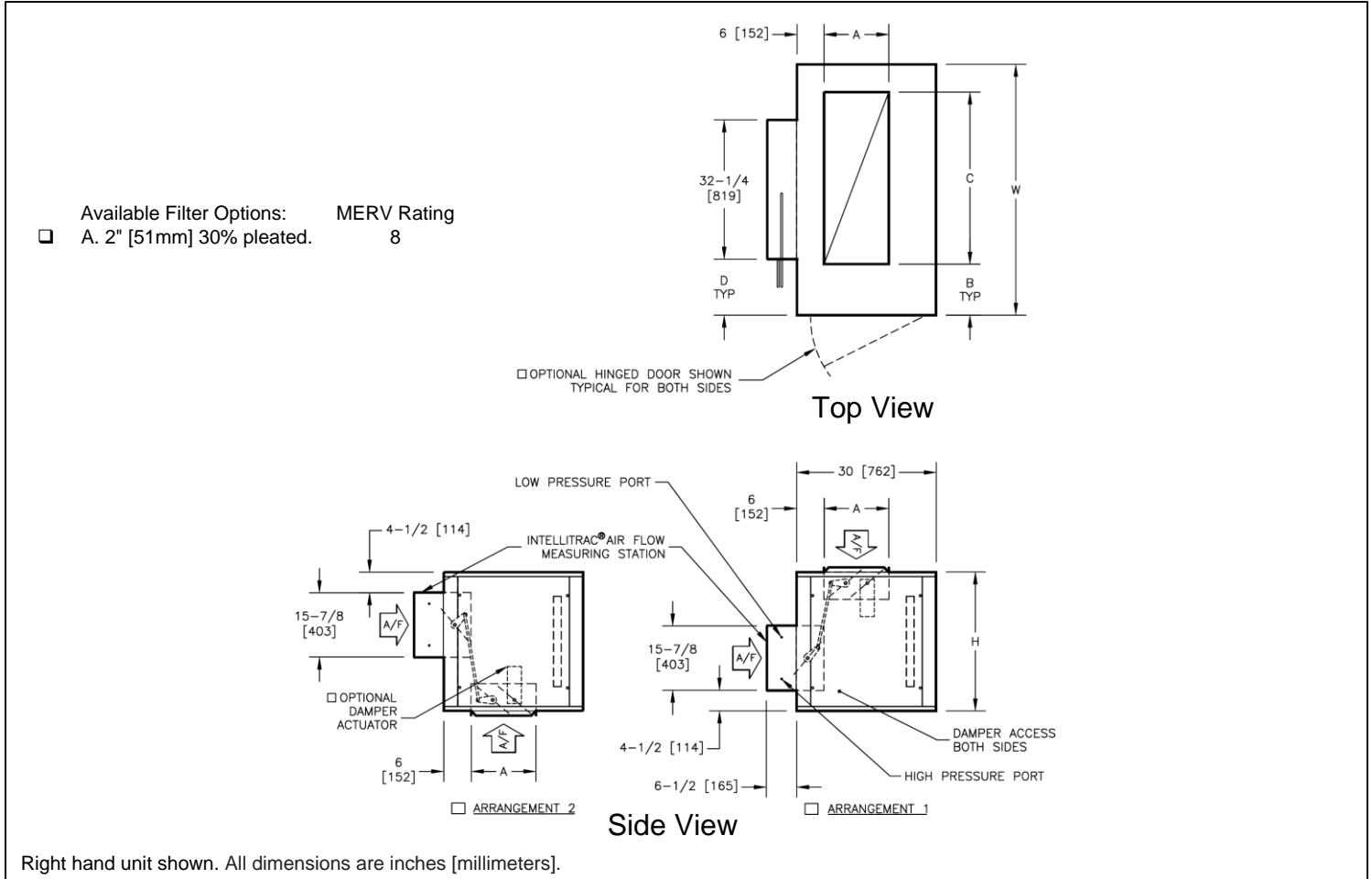
Unit Size	H	W	A	B	C	D	E	ACCESS PANEL H X W	WEIGHT		FILTER SIZES
									SINGLE WALL lbs [kg]	DOUBLE WALL lbs [kg]	
02	22 [559]	30 [762]	10 [254]	9 [229]	12 [305]	9 7/8 [251]	10 1/16 [256]	20x24 [508x610]	110 [50]	135 [61]	(1) 16x20 [406x508]
03	22 [559]	36 [914]	10 [254]	9 [229]	18 [457]	9 7/8 [251]	13 1/16 [332]	20x24 [508x610]	120 [55]	150 [68]	(1) 16x25 [406x635]
04	22 [559]	44 [1118]	10 [254]	10 [254]	24 [610]	11 7/8 [302]	16 1/16 [408]	20x24 [508x610]	136 [62]	171 [78]	(2) 16x20 [406x508]
06	30 [762]	44 [1118]	14 [356]	9 [229]	26 [660]	13 7/8 [352]	15 1/16 [383]	28x24 [711x610]	160 [73]	200 [91]	(2) 20x25 [508x635]
08	34 [864]	48 [1219]	14 [356]	6 [152]	36 [914]	15 7/8 [403]	16 1/16 [408]	32x24 [813x610]	185 [84]	230 [104]	(2) 20x25 [508x635]

Notes:

1. Duct collars are 1" [25] all around.
2. Damper linkage is factory provided and installed.
3. Optional damper actuator will be located on the inside of module on the same side as the control enclosure.
4. Optional hinged door is removable, but must be opened 90° for removal.
5. High pressure port and low pressure port tubing will be run to the same side of module as the motor sheave.

MFM

Medium Flowstar Mixing Box with Flat Filters Module



Unit Size	H	W	A	B	C	D	ACCESS PANEL		WEIGHT		FILTER SIZES
							DAMPER H X W	SINGLE WALL lbs [kg]	DOUBLE WALL lbs [kg]		
10	34 [864]	58 [1473]	14 [356]	7 [178]	44 [1118]	12 7/8 [327]	32x24 [813x610]	220 [95]	260 [118]	(1) 16x25 (2) 20x25 [406x635] [508x635]	
12	44 [1118]	66 [1676]	16 [406]	10 [254]	46 [1168]	16 7/8 [429]	42x24 [1067x610]	265 [120]	325 [147]	(4) 20x25 [508x635]	

Notes:

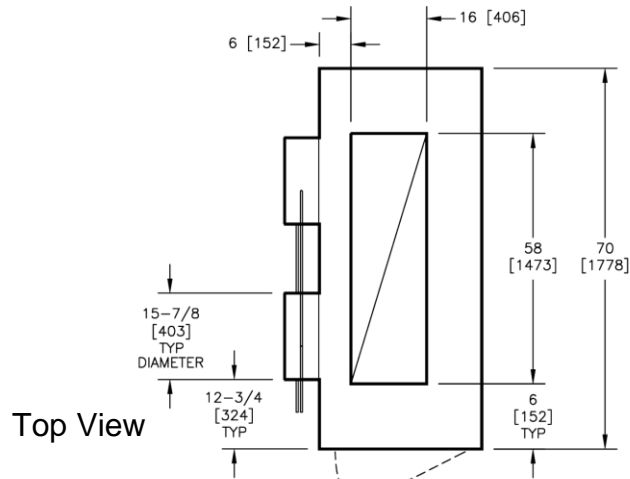
1. Duct collars are 1" [25] all around.
2. Damper linkage is factory provided and installed.
3. Optional damper actuator will be located on the inside of module on the same side as the control enclosure.
4. Optional hinged door is removable, but must be opened 90° for removal.
5. High pressure port and low pressure port tubing will be run to the same side of module as the motor sheave.

MFM

Medium Flowstar Mixing Box with Flat Filter Module

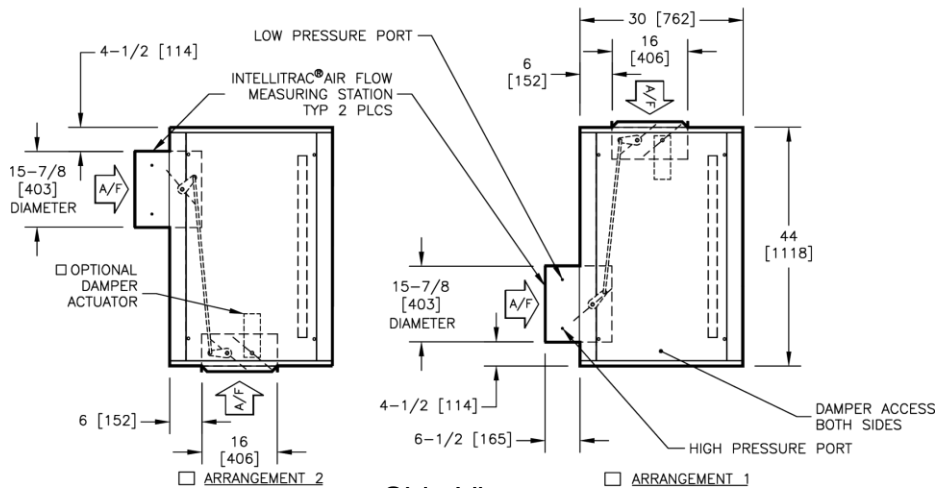
Size 14

- Available Filter Options: MERV Rating
 A. 2" [51mm] 30% pleated. 8



Top View

OPTIONAL HINGED DOOR SHOWN TYPICAL FOR BOTH SIDES



Side View

Right hand unit shown. All dimensions are inches [millimeters].

ACCESS PANEL H X W	WEIGHT		FILTER SIZES
	SINGLE WALL lbs [kg]	DOUBLE WALL lbs [kg]	
42x24 [1067x610]	285 [129]	345 [156]	(8) 16x20 [406x508]

Notes:

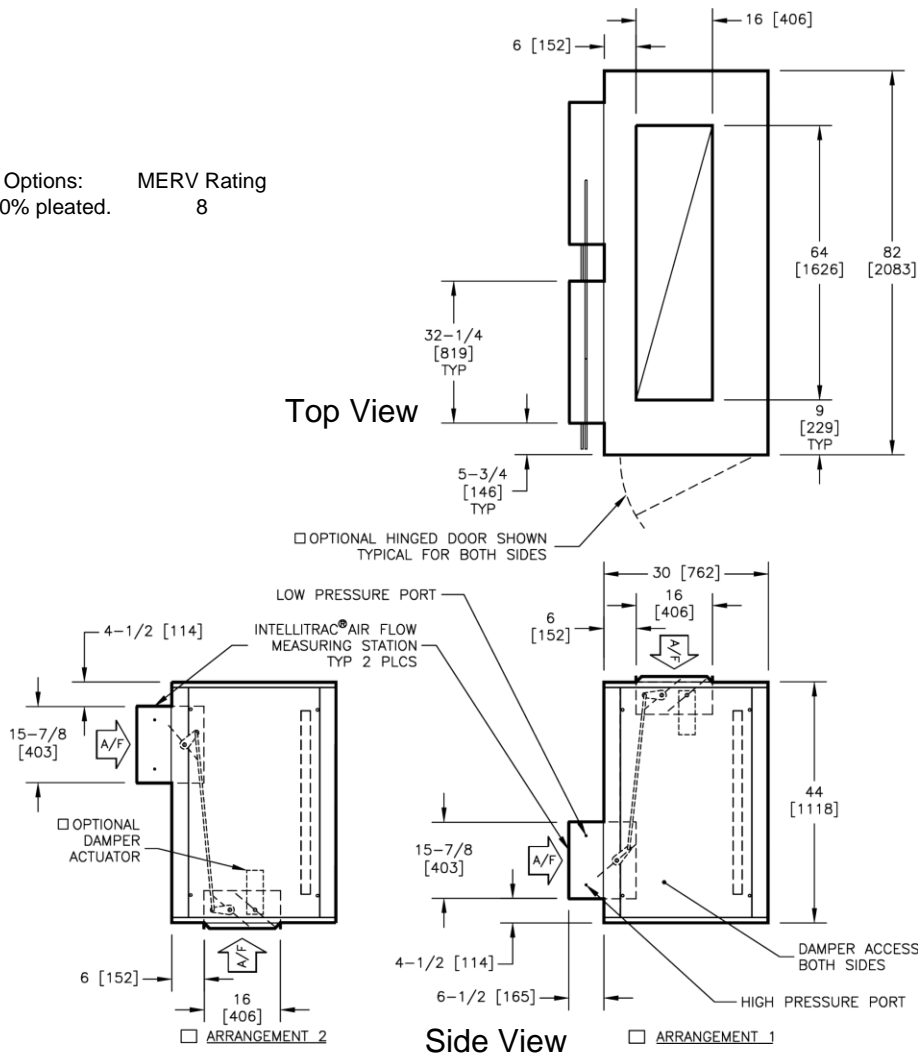
1. Duct collars are 1" [25] all around.
2. Damper linkage is factory provided and installed.
3. Optional damper actuator will be located on the inside of module on the same side as the control enclosure.
4. Optional hinged door is removable, but must be opened 90° for removal.
5. High pressure port and low pressure port tubing will be run to the same side of module as the motor sheave.

MFM

Medium Flowstar Mixing Box with Flat Filters Module

Size 17

- Available Filter Options: MERV Rating
 A. 2" [51mm] 30% pleated. 8



Right hand unit shown. All dimensions are inches [millimeters].

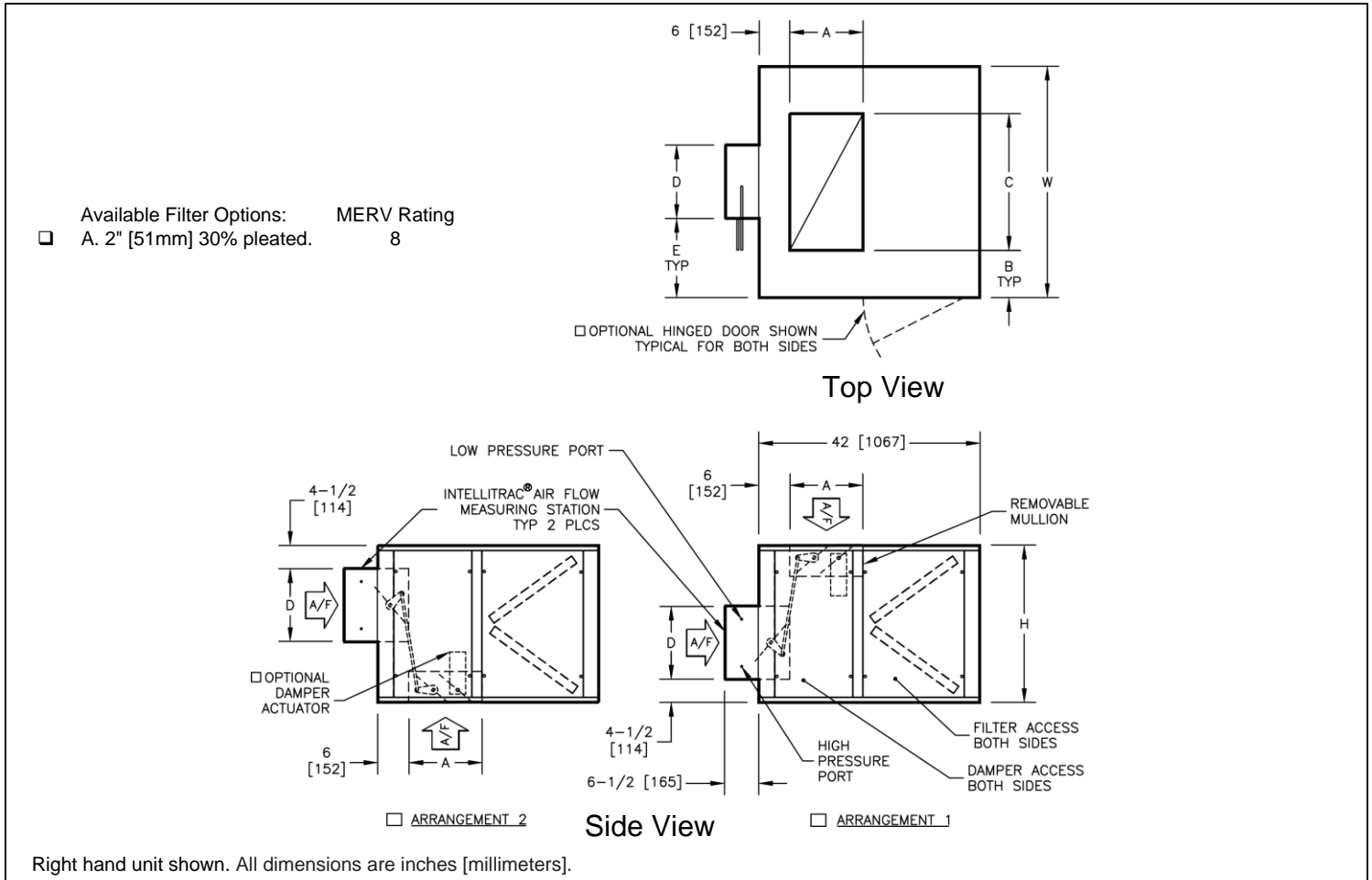
ACCESS PANEL H X W	WEIGHT		FILTER SIZES
	SINGLE WALL lbs [kg]	DOUBLE WALL lbs [kg]	
42x24 [1067x610]	325 [147]	380 [172]	(6) 20x25 [508x635]

Notes:

1. Duct collars are 1" [25] all around.
2. Damper linkage is factory provided and installed.
3. Optional damper actuator will be located on the inside of module on the same side as the control enclosure.
4. Optional hinged door is removable, but must be opened 90° for removal.
5. High pressure port and low pressure port tubing will be run to the same side of module as the motor sheave.

LFM

Large Flowstar Mixing Box with V-Bank Filters Module



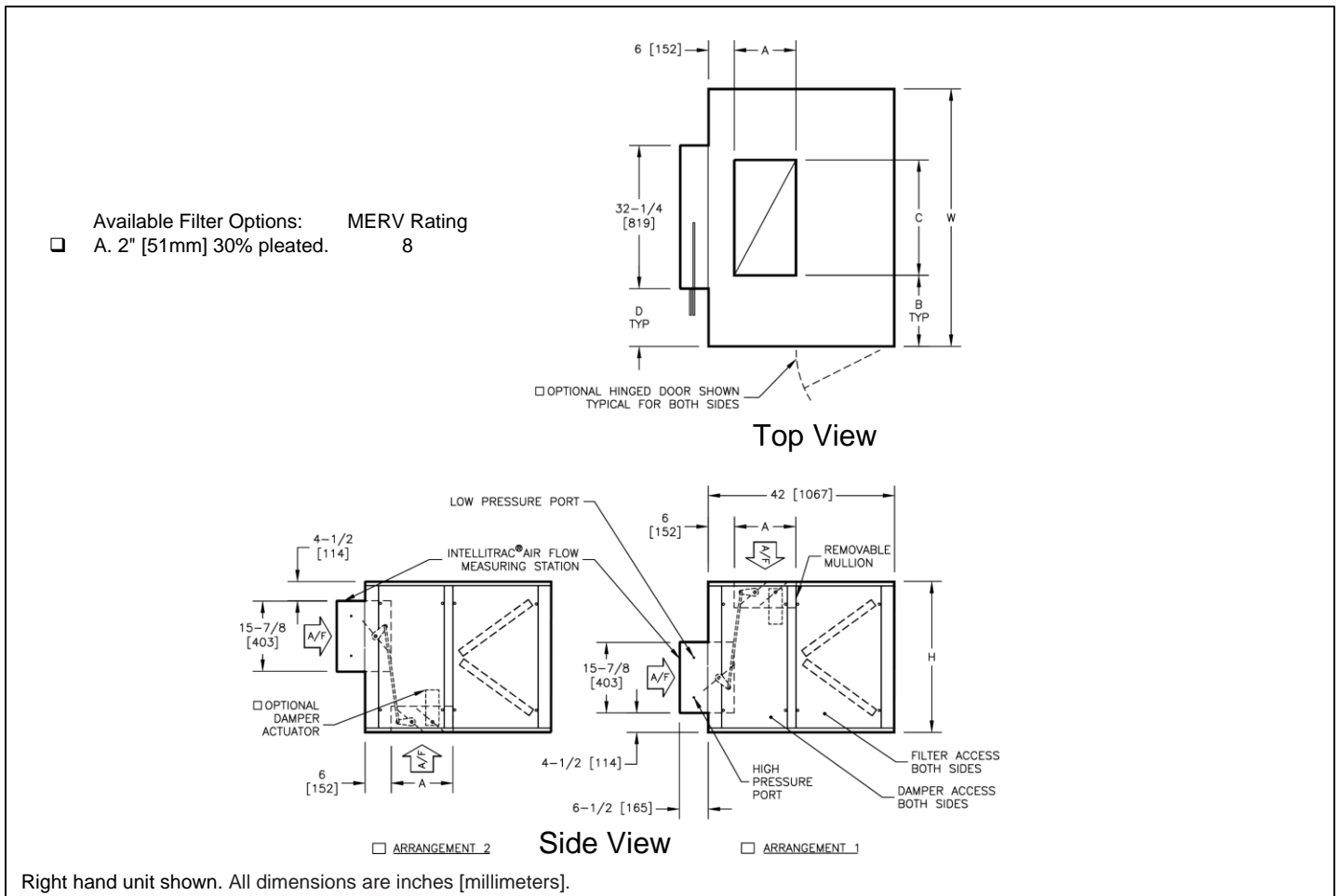
Unit Size	H	W	A	B	C	D	E	ACCESS PANEL		WEIGHT		FILTER SIZES
								DAMPER H X W	FILTER H X W	SINGLE WALL lbs [kg]	DOUBLE WALL lbs [kg]	
02	22 [559]	30 [762]	10 [254]	9 [229]	12 [305]	9 7/8 [251]	10 1/16 [256]	20x12 [508x305]	20x21 1/2 [508x546]	130 [59]	170 [77]	(2) 16x20 [406x508]
03	22 [559]	36 [914]	10 [254]	9 [229]	18 [457]	9 7/8 [251]	13 1/16 [332]	20x12 [508x305]	20x21 1/2 [508x546]	145 [66]	190 [86]	(2) 16x25 [406x635]
04	22 [559]	44 [1118]	10 [254]	10 [254]	24 [610]	11 7/8 [302]	16 1/16 [408]	20x12 [508x305]	20x21 1/2 [508x546]	160 [73]	220 [100]	(2) 20x25 [508x635]
06	30 [762]	44 [1118]	14 [356]	9 [229]	26 [660]	13 7/8 [352]	15 1/16 [383]	28x12 [711x305]	28x21 1/2 [711x546]	210 [95]	250 [114]	(4) 20x20 [508x508]
08	34 [864]	48 [1219]	14 [356]	6 [152]	36 [914]	15 7/8 [403]	16 1/16 [408]	32x12 [813x305]	32x21 1/2 [813x546]	220 [100]	280 [127]	(2) 16x20 (2) 20x25 [406x508] [508x635]

Notes:

1. Damper linkage is factory provided and installed.
2. Optional damper actuator will be located on the inside of module on the same side as the control enclosure.
3. Optional hinged door is removable, but must be opened 90° for removal.
4. High pressure port and low pressure port tubing will be run to the same side of module as the motor sheave.

LFM

Large Flowstar Mixing Box with V-Bank Filters Module



Unit Size	H	W	A	B	C	D	ACCESS PANEL		WEIGHT		FILTER SIZES
							DAMPER H X W	FILTER H X W	SINGLE WALL lbs [kg]	DOUBLE WALL lbs [kg]	
10	34 [864]	58 [1473]	14 [356]	7 [178]	44 [1118]	12 7/8 [327]	32x12 [813x305]	32x21 1/2 [813x546]	235 [107]	315 [143]	(2) 16x20 (4) 20x20 [406x508] [508x508]
12	44 [1118]	66 [1676]	16 [406]	10 [254]	46 [1168]	16 7/8 [429]	42x12 [1067x305]	42x21 1/2 [1067x546]	280 [127]	380 [173]	(6) 20x25 [508x635]

Notes:

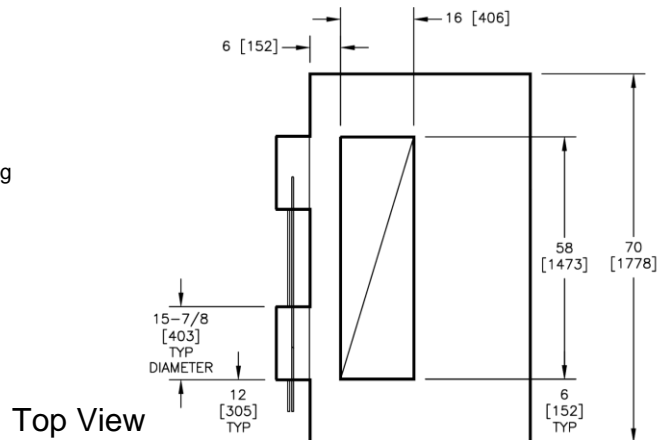
1. Damper linkage is factory provided and installed.
2. Optional damper actuator will be located on the inside of module on the same side as the control enclosure.
3. Optional hinged door is removable, but must be opened 90° for removal.
4. High pressure port and low pressure port tubing will be run to the same side of module as the motor sheave.

LFM

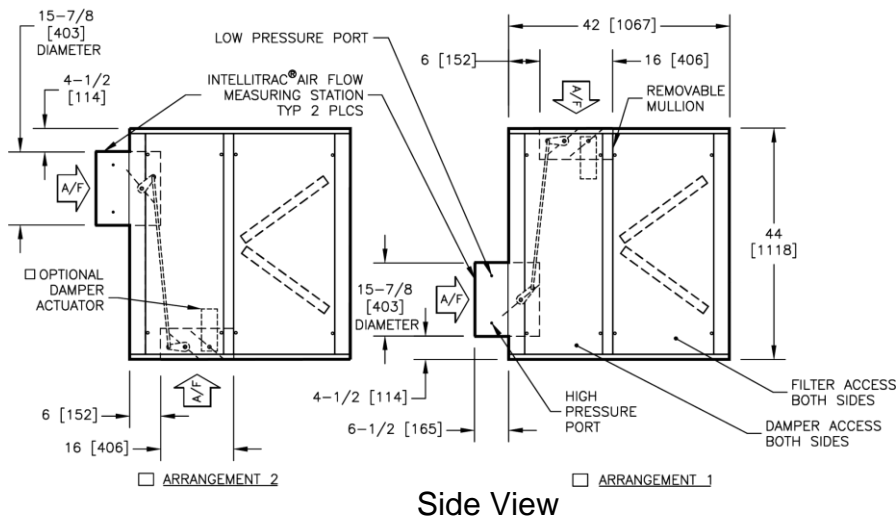
Large Flowstar Mixing Box with V-Bank Filters Module

Size 14

- Available Filter Options: MERV Rating
 A. 2" [51mm] 30% pleated. 8



OPTIONAL HINGED DOOR SHOWN TYPICAL FOR BOTH SIDES



ARRANGEMENT 2

ARRANGEMENT 1

Side View

Right hand unit shown. All dimensions are inches [millimeters].

ACCESS PANEL		WEIGHT		FILTER SIZES
DAMPER H X W	FILTER H X W	SINGLE WALL lbs [kg]	DOUBLE WALL lbs [kg]	
42x12 [1067x305]	42x21 1/2 [1067x546]	310 [141]	420 [191]	(3) 20x25 (6) 20x20 [508x635] [508x508]

Notes:

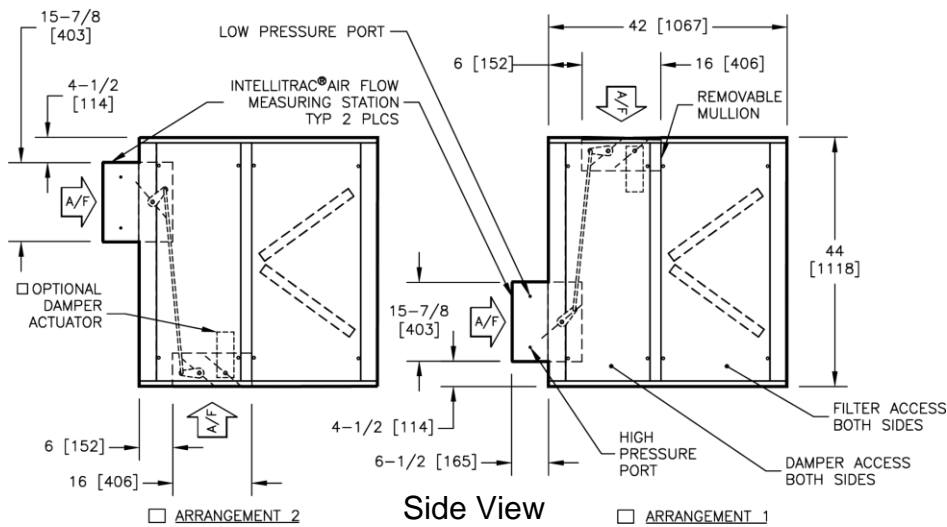
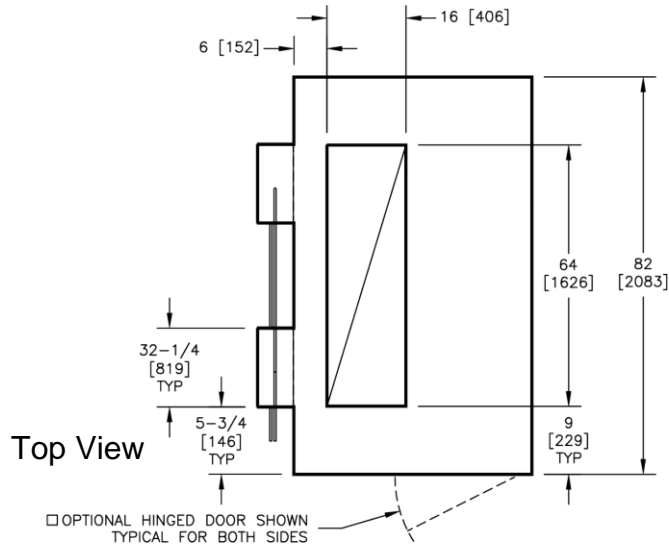
1. Damper linkage is factory provided and installed.
2. Optional damper actuator will be located on the inside of module on the same side as the control enclosure.
3. Optional hinged door is removable, but must be opened 90° for removal.
4. High pressure port and low pressure port tubing will be run to the same side of module as the motor sheave.

LFM

Large Flowstar Mixing Box with V-Bank Filters Module

Size 17

- Available Filter Options: MERV Rating 8
 A. 2" [51mm] 30% pleated.



Right hand unit shown. All dimensions are inches [millimeters].

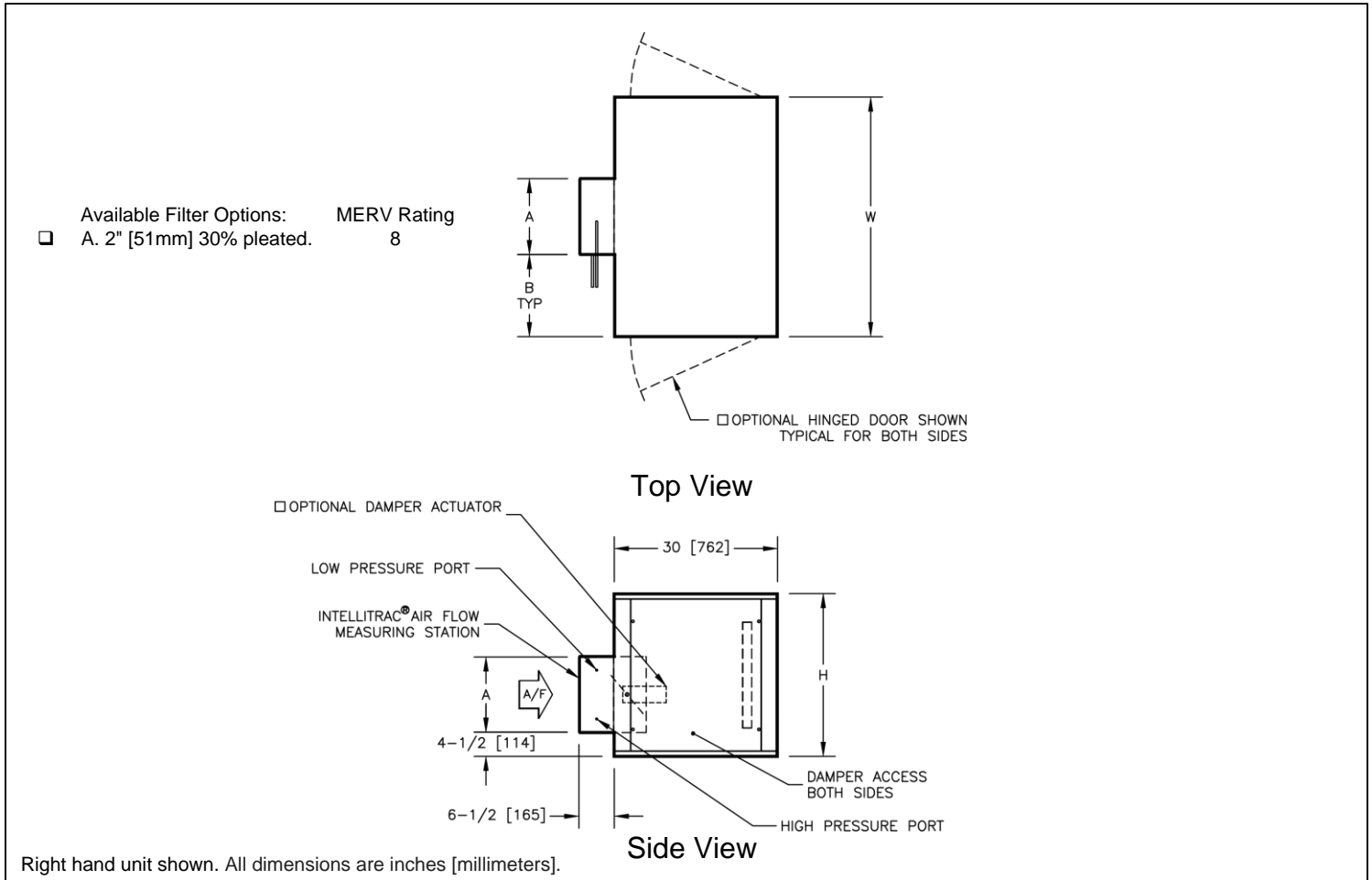
ACCESS PANEL		WEIGHT		FILTER SIZES
DAMPER H X W	FILTER H X W	SINGLE WALL lbs [kg]	DOUBLE WALL lbs [kg]	
42x12 [1067x305]	42x21 1/2 [1067x546]	350 [159]	470 [214]	(12) 20x20 [508x508]

Notes:

1. Damper linkage is factory provided and installed. Typ for both dampers
2. Optional damper actuator will be located on the inside of module on the same side as the control enclosure.
3. Optional hinged door is removable, but must be opened 90° for removal.
4. High pressure port and low pressure port tubing will be run to the same side of module as the motor sheave.

MIM

Medium Flowstar Inlet Plenum with Flat Filters Module



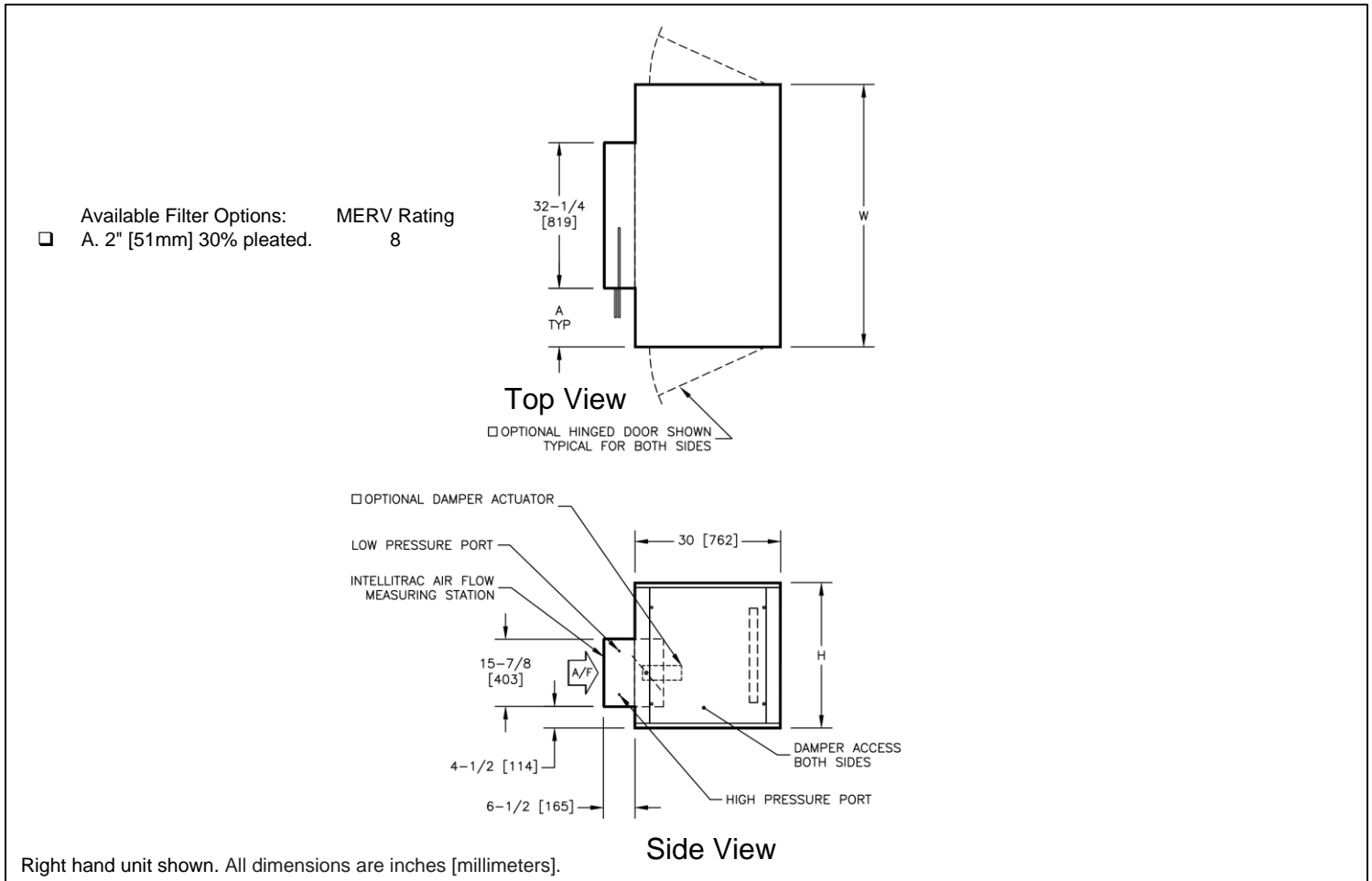
Unit Size	H	W	A	B	ACCESS PANEL H X W	WEIGHT		FILTER SIZES
						SINGLE WALL lbs [kg]	DOUBLE WALL lbs [kg]	
02	22 [559]	30 [762]	9 7/8 [251]	10 1/16 [256]	20x24 [508x610]	110 [50]	135 [61]	(1) 16x20 [406x508]
03	22 [559]	36 [914]	9 7/8 [251]	13 1/16 [332]	20x24 [508x610]	120 [55]	150 [68]	(1) 16x25 [406x635]
04	22 [559]	44 [1118]	11 7/8 [302]	16 1/16 [408]	20x24 [508x610]	136 [62]	171 [78]	(2) 16x20 [406x508]
06	30 [762]	44 [1118]	13 7/8 [352]	15 1/16 [383]	28x24 [711x610]	160 [73]	200 [91]	(2) 20x25 [508x635]
08	34 [864]	48 [1219]	15 7/8 [403]	16 1/16 [408]	32x24 [813x610]	185 [84]	230 [104]	(2) 20x25 [508x635]

Notes:

1. Damper is factory provided and installed as standard feature.
2. Optional damper actuator will be located on the inside of module on the same side as the motor sheave.
3. Optional hinged door is removable, but must be opened 90° for removal.
4. High pressure port and low pressure port tubing will be run to the same side of module as the motor sheave.

MIM

Medium Flowstar Inlet Plenum with Flat Filters Module



Unit Size	H	W	A	ACCESS PANEL H X W	WEIGHT		FILTER SIZES
					SINGLE WALL lbs [kg]	DOUBLE WALL lbs [kg]	
10	34 [864]	58 [1473]	12 7/8 [327]	32x24 [813x610]	220 [95]	260 [118]	(1) 16x25 (2) 20x25 [406x635] [508x635]
12	44 [1118]	66 [1676]	16 7/8 [429]	42x24 [1067x610]	265 [120]	325 [147]	(4) 20x25 [508x635]

Notes:

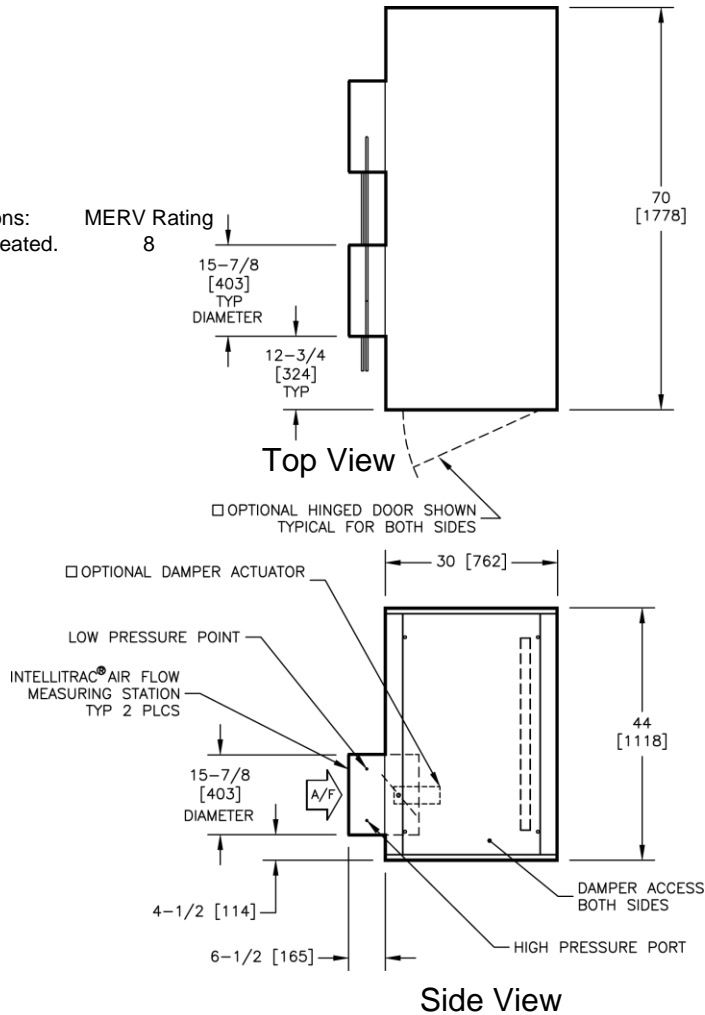
1. Damper is factory provided and installed as standard feature.
2. Optional damper actuator will be located on the inside of module on the same side as the motor sheave.
3. Optional hinged door is removable, but must be opened 90° for removal.
4. High pressure port and low pressure port tubing will be run to the same side of module as the motor sheave.

MIM

Medium Flowstar Inlet Plenum with Flat Filters Module

Size 14

- Available Filter Options:
- A. 2" [51mm] 30% pleated.



Right hand unit shown. All dimensions are inches [millimeters].

ACCESS PANEL H X W	WEIGHT		FILTER SIZES
	SINGLE WALL lbs [kg]	DOUBLE WALL lbs [kg]	
42x24 [1067x610]	285 [129]	345 [156]	(8) 16x20 [406x508]

Notes:

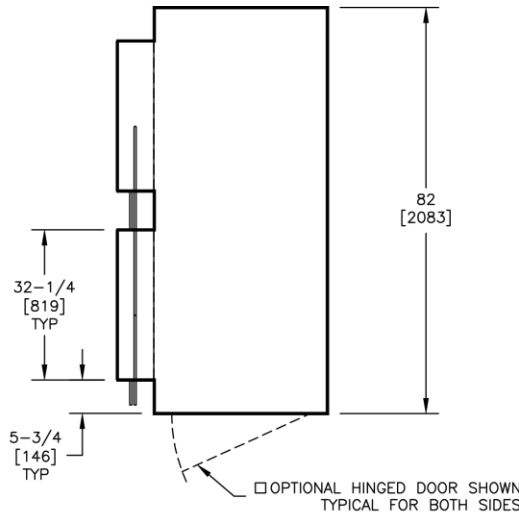
1. Damper is factory provided and installed as standard feature. Typ for both dampers.
2. Optional damper actuator will be located on the inside of module on the same side as the motor sheave.
3. Optional hinged door is removable, but must be opened 90° for removal.
4. High pressure port and low pressure port tubing will be run to the same side of module as the motor sheave.

MIM

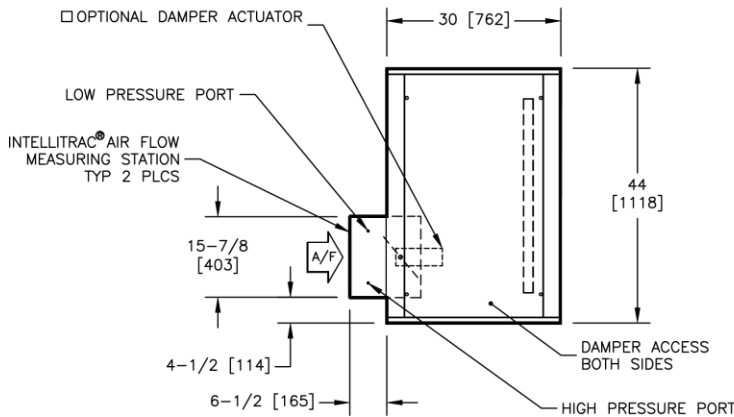
Medium Flowstar Inlet Plenum with Flat Filters Module

Size 17

- Available Filter Options: MERV Rating
 A. 2" [51mm] 30% pleated. 8



Top View



Side View

Right hand unit shown. All dimensions are inches [millimeters].

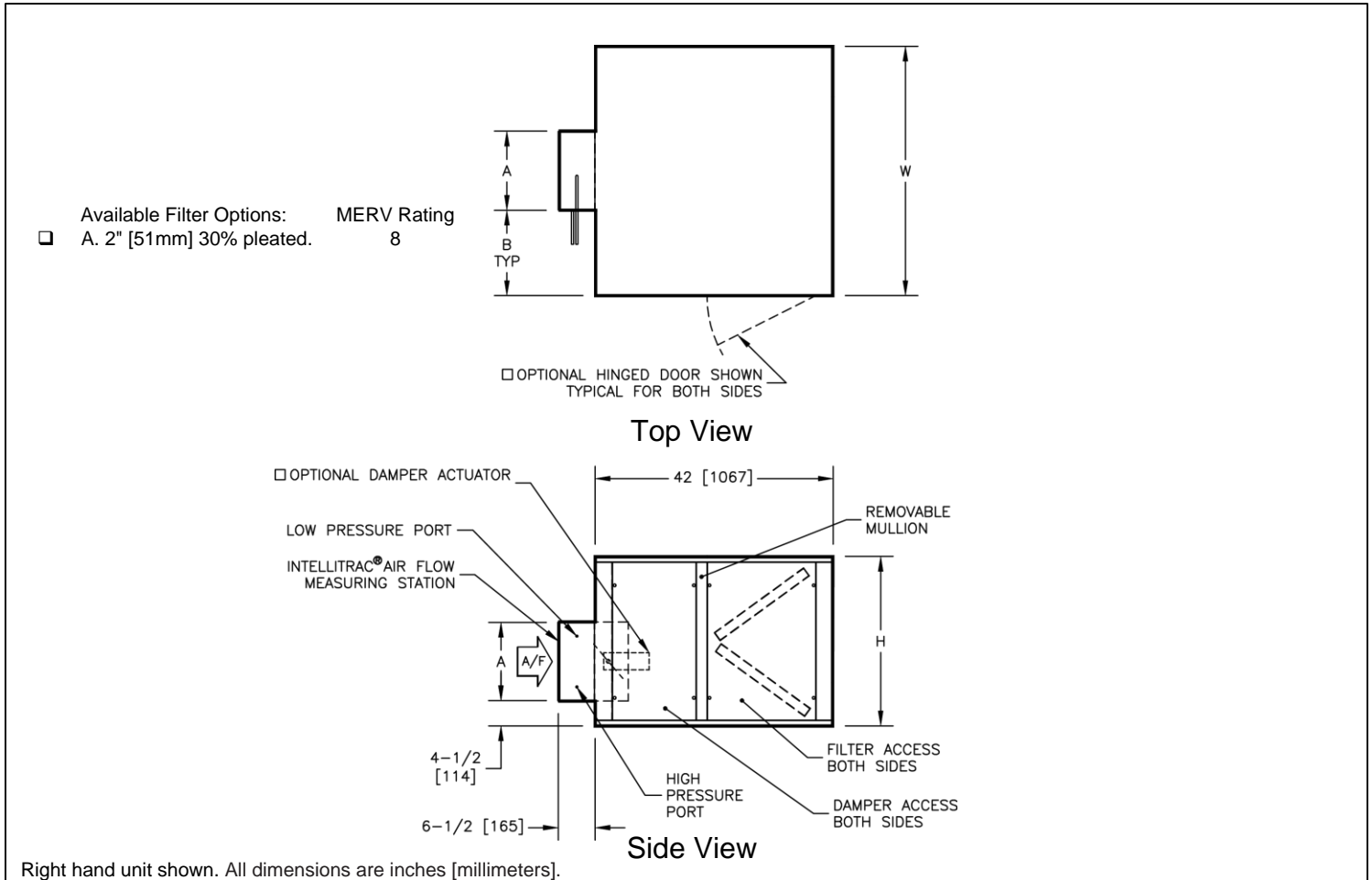
ACCESS PANEL H X W	WEIGHT		FILTER SIZES
	SINGLE WALL lbs [kg]	DOUBLE WALL lbs [kg]	
42x24 [1067x610]	325 [147]	380 [172]	(6) 20x25 [508x635]

Notes:

1. Damper is factory provided and installed as standard feature. Typ for both dampers.
2. Optional damper actuator will be located on the inside of module on the same side as the motor sheave.
3. Optional hinged door is removable, but must be opened 90° for removal.
4. High pressure port and low pressure port tubing will be run to the same side of module as the motor sheave.

LIM

Large Flowstar Inlet Plenum with V-Bank Filters Module



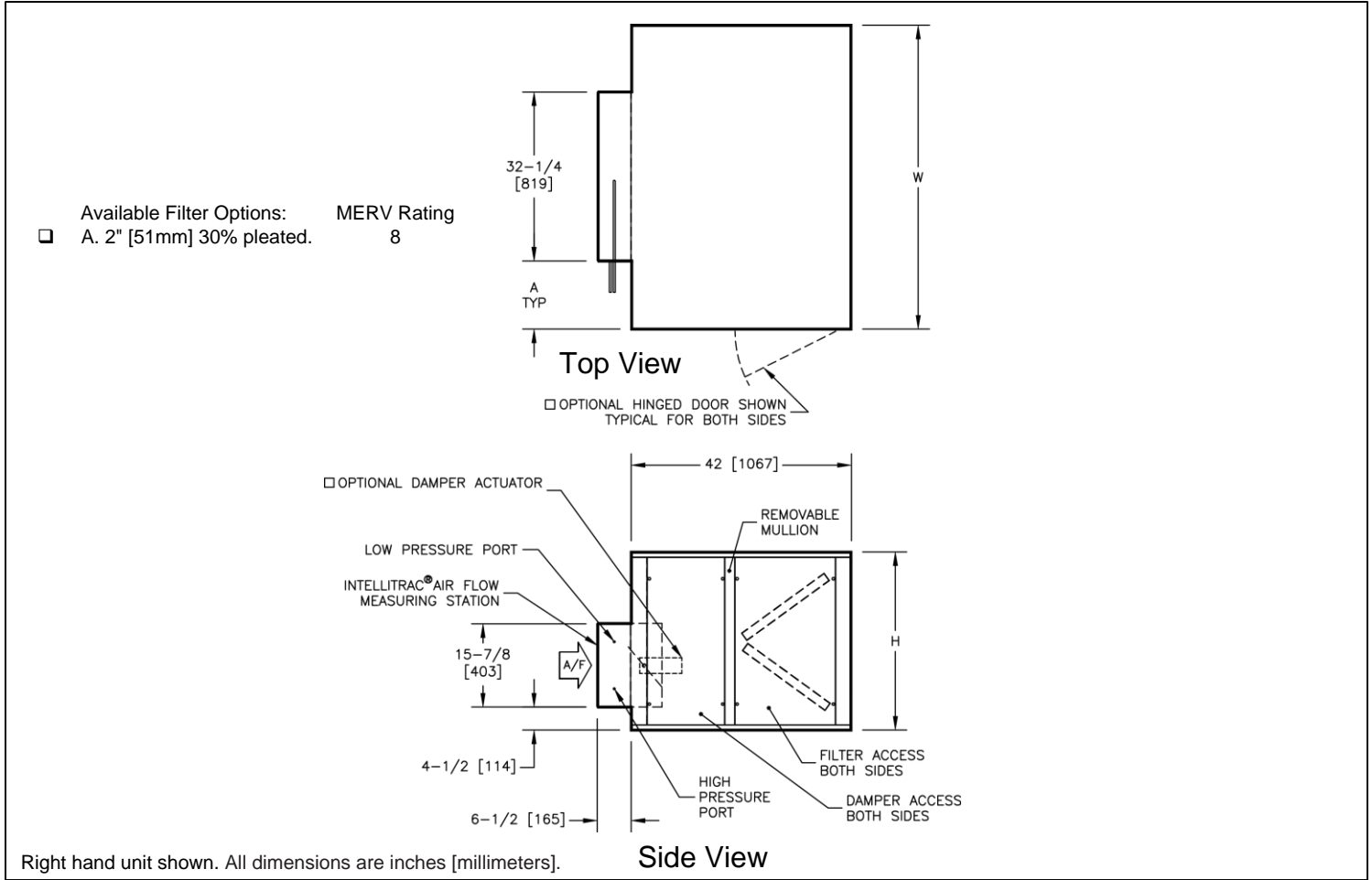
Unit Size	H	W	A	B	ACCESS PANEL		WEIGHT		FILTER SIZES
					DAMPER H X W	FILTER H X W	SINGLE WALL lbs [kg]	DOUBLE WALL lbs [kg]	
02	22 [559]	30 [762]	9 7/8 [251]	10 1/16 [256]	20x12 [508x305]	20x21 1/2 [508x546]	130 [59]	170 [77]	(2) 16x20 [406x508]
03	22 [559]	36 [914]	9 7/8 [251]	13 1/16 [332]	20x12 [508x305]	20x21 1/2 [508x546]	145 [66]	190 [86]	(2) 16x25 [406x635]
04	22 [559]	44 [1118]	11 7/8 [302]	16 1/16 [408]	20x12 [508x305]	20x21 1/2 [508x546]	160 [73]	220 [100]	(2) 20x25 [508x635]
06	30 [762]	44 [1118]	13 7/8 [352]	15 1/16 [383]	28x12 [711x305]	28x21 1/2 [711x546]	210 [95]	250 [114]	(4) 20x20 [508x508]
08	34 [864]	48 [1219]	15 7/8 [403]	16 1/16 [408]	32x12 [813x305]	32x21 1/2 [813x546]	220 [100]	280 [127]	(2) 16x20 (2) 20x25 [406x508] [508x635]

Notes:

1. Damper is factory provided and installed as standard feature.
2. Optional damper actuator will be located on the inside of module on the same side as the motor sheave.
3. Optional hinged door is removable, but must be opened 90° for removal.
4. High pressure port and low pressure port tubing will be run to the same side of module as the motor sheave.

LIM

Large Flowstar Inlet Plenum with V-Bank Filters Module



Unit Size	H	W	A	ACCESS PANEL		WEIGHT		FILTER SIZES
				DAMPER H X W	FILTER H X W	SINGLE WALL lbs [kg]	DOUBLE WALL lbs [kg]	
10	34 [864]	58 [1473]	12 7/8 [327]	32x12 [813x305]	32x21 1/2 [813x546]	235 [107]	315 [143]	(2) 16x20 (4) 20x20 [406x508] [508x508]
12	44 [1118]	66 [1676]	16 7/8 [429]	42x12 [1067x305]	42x21 1/2 [1067x546]	280 [127]	380 [173]	(6) 20x25 [508x635]

Notes:

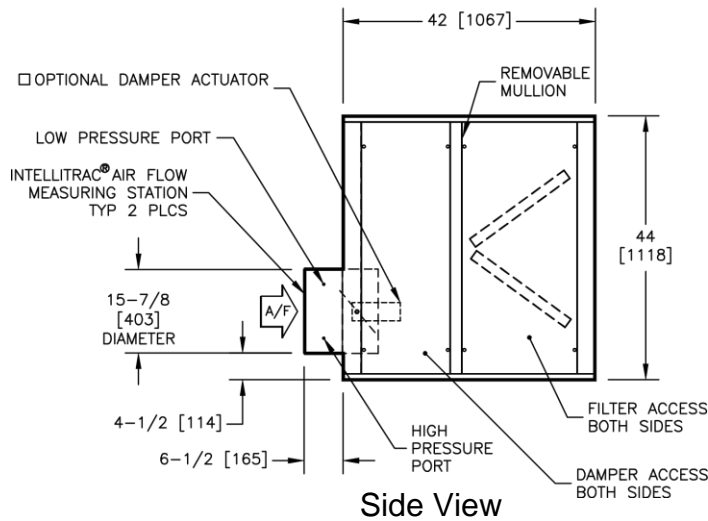
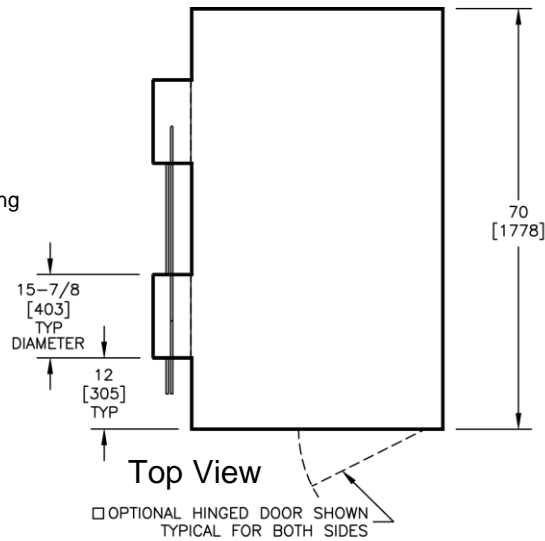
1. Damper is factory provided and installed as standard feature.
2. Optional damper actuator will be located on the inside of module on the same side as the motor sheave.
3. Optional hinged door is removable, but must be opened 90° for removal.
4. High pressure port and low pressure port tubing will be run to the same side of module as the motor sheave.

LIM

Large Flowstar Inlet Plenum with V-Bank Filters Module

Size 14

- Available Filter Options: MERV Rating 8
 A. 2" [51mm] 30% pleated.



Right hand unit shown. All dimensions are inches [millimeters].

ACCESS PANEL		WEIGHT		FILTER SIZES
DAMPER H X W	FILTER H X W	SINGLE WALL lbs [kg]	DOUBLE WALL lbs [kg]	
42x12 [1067x305]	42x21 1/2 [1067x546]	310 [141]	420 [191]	(3) 20x25 (6) 20x20 [508x635] [508x508]

Notes:

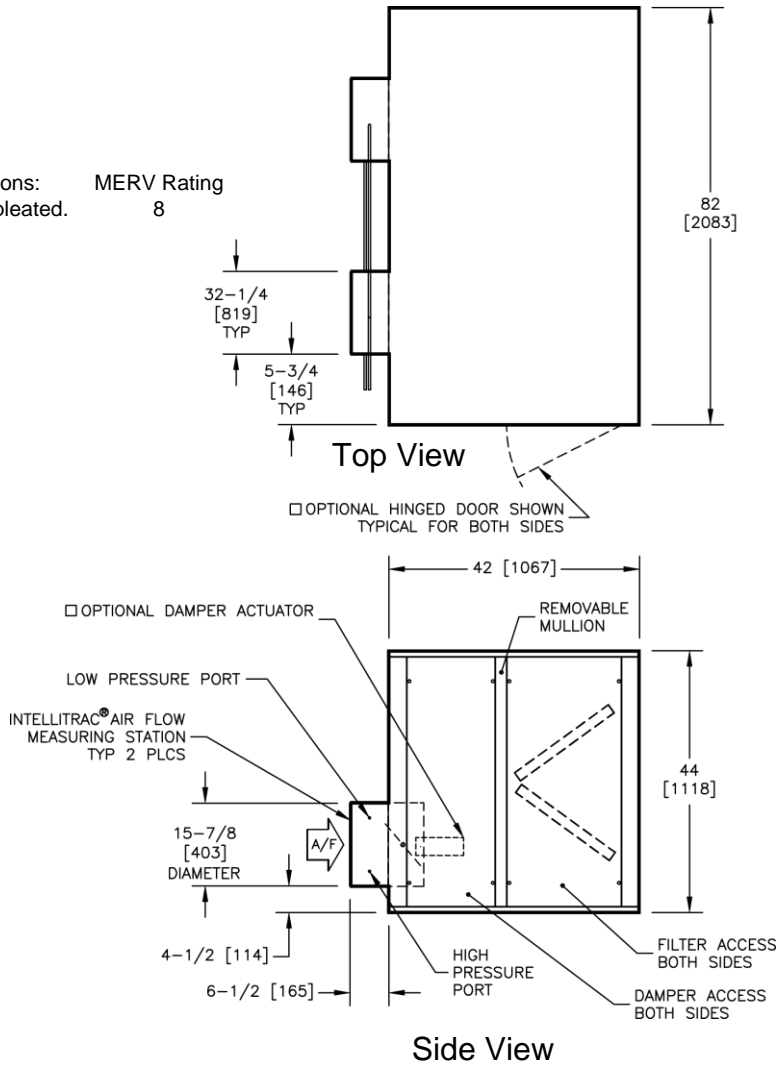
1. Damper is factory provided and installed as standard feature. Typ for both dampers.
2. Optional damper actuator will be located on the inside of module on the same side as the motor sheave.
3. Optional hinged door is removable, but must be opened 90° for removal.
4. High pressure port and low pressure port tubing will be run to the same side of module as the motor sheave.

LIM

Large Flowstar Inlet Plenum with V-Bank Filters Module

Size 17

- Available Filter Options: MERV Rating 8
 A. 2" [51mm] 30% pleated.



Right hand unit shown. All dimensions are inches [millimeters].

ACCESS PANEL		WEIGHT		FILTER SIZES
DAMPER H X W	FILTER H X W	SINGLE WALL lbs [kg]	DOUBLE WALL lbs [kg]	
42x12 [1067x305]	42x21 1/2 [1067x546]	350 [159]	470 [214]	(12) 20x20 [508x508]

Notes:

1. Damper is factory provided and installed as standard feature. Typ for both dampers.
2. Optional damper actuator will be located on the inside of module on the same side as the motor sheave.
3. Optional hinged door is removable, but must be opened 90° for removal.
4. High pressure port and low pressure port tubing will be run to the same side of module as the motor sheave.

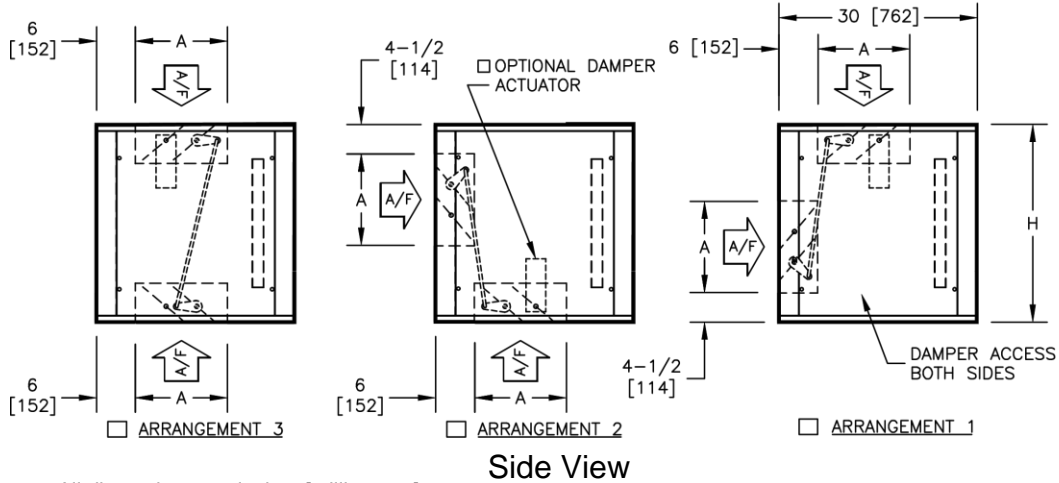
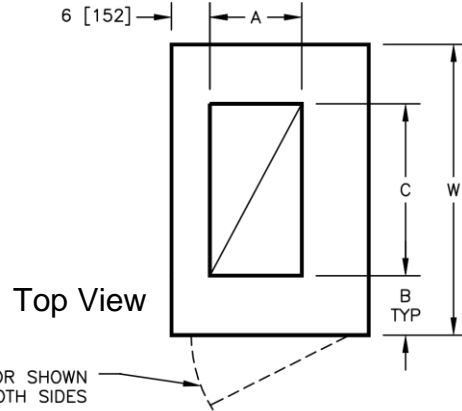
MMM

Medium Mixing Box with Flat Filters Module

Notes:

1. Damper linkage is factory provided and installed.
2. Optional damper actuator will be located on the inside of module on the same side as the control enclosure.
3. Optional hinged door is removable, but must be opened 90° for removal.

Available Filter Options: MERV Rating
 A. 2" [51mm] 30% pleated. 8



Right hand unit shown. All dimensions are inches [millimeters].

Unit Size	H	W	A	B	C	ACCESS PANEL H X W	WEIGHT		FILTER SIZES
							SINGLE WALL lbs [kg]	DOUBLE WALL lbs [kg]	
02	22 [559]	30 [762]	10 [254]	9 [229]	12 [305]	20x24 [508x610]	110 [50]	135 [61]	(1) 16x20 [406x508]
03	22 [559]	36 [914]	10 [254]	9 [229]	18 [457]	20x24 [508x610]	120 [55]	150 [68]	(1) 16x25 [406x635]
04	22 [559]	44 [1118]	10 [254]	10 [254]	24 [610]	20x24 [508x610]	136 [62]	171 [78]	(2) 16x20 [406x508]
06	30 [762]	44 [1118]	14 [356]	9 [229]	26 [660]	28x24 [711x610]	160 [73]	200 [91]	(2) 20x25 [508x635]
08	34 [864]	48 [1219]	14 [356]	6 [152]	36 [914]	32x24 [813x610]	185 [84]	230 [104]	(2) 20x25 [508x635]
10	34 [864]	58 [1473]	14 [356]	7 [178]	44 [1118]	32x24 [813x610]	210 [95]	260 [118]	(1) 16x25 (2) 20x25 [406x635] [508x635]
12	44 [1118]	66 [1676]	16 [406]	10 [254]	46 [1168]	42x24 [1067x610]	265 [120]	325 [147]	(4) 20x25 [508x635]
14	44 [1118]	70 [1778]	16 [406]	6 [152]	58 [1473]	42x24 [1067x610]	285 [129]	345 [156]	(8) 16x20 [406x508]
17	44 [1118]	82 [2083]	16 [406]	9 [229]	64 [1626]	42x24 [1067x610]	325 [147]	380 [172]	(6) 20x25 [508x635]

LMM

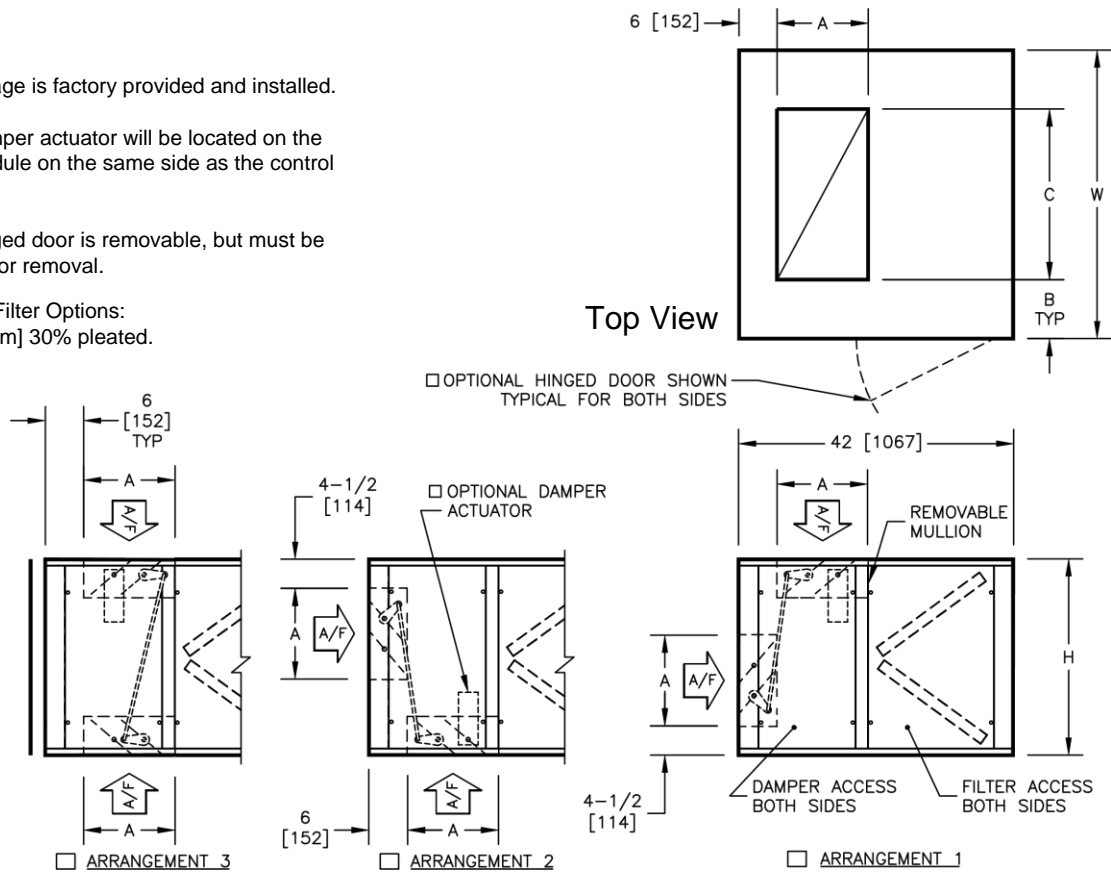
Large Mixing Box with V-Bank Filters Module

Notes:

1. Damper linkage is factory provided and installed.
2. Optional damper actuator will be located on the inside of module on the same side as the control enclosure.
3. Optional hinged door is removable, but must be opened 90° for removal.

Available Filter Options:

- A. 2" [51mm] 30% pleated.



Side View

Right hand unit shown. All dimensions are inches [millimeters].

Unit Size	H	W	A	B	C	ACCESS PANEL		WEIGHT		FILTER SIZES
						DAMPER H X W	FILTER H X W	SINGLE WALL lbs [kg]	DOUBLE WALL lbs [kg]	
02	22 [559]	30 [762]	10 [254]	9 [229]	12 [305]	20x12 [508x305]	20x21 1/2 [508x546]	130 [59]	170 [77]	(2) 16x20 [406x508]
03	22 [559]	36 [914]	10 [254]	9 [229]	18 [457]	20x12 [508x305]	20x21 1/2 [508x546]	145 [66]	190 [86]	(2) 16x25 [406x635]
04	22 [559]	44 [1118]	10 [254]	10 [254]	24 [610]	20x12 [508x305]	20x21 1/2 [508x546]	160 [73]	220 [100]	(2) 20x25 [508x635]
06	30 [762]	44 [1118]	14 [356]	9 [229]	26 [660]	28x12 [711x305]	28x21 1/2 [711x546]	210 [95]	250 [114]	(4) 20x20 [508x508]
08	34 [864]	48 [1219]	14 [356]	6 [152]	36 [914]	32x12 [813x305]	32x21 1/2 [813x546]	220 [100]	280 [127]	(2) 16x20 (2) 20x25 [406x508] [508x635]
10	34 [864]	58 [1473]	14 [356]	7 [178]	44 [1118]	32x12 [813x305]	32x21 1/2 [813x546]	235 [107]	315 [143]	(2) 16x20 (4) 20x20 [406x508] [508x508]
12	44 [1118]	66 [1676]	16 [406]	10 [254]	46 [1168]	42x12 [1067x305]	42x21 1/2 [1067x546]	280 [127]	380 [173]	(6) 20x25 [508x635]
14	44 [1118]	70 [1778]	16 [406]	6 [152]	58 [1473]	42x12 [1067x305]	42x21 1/2 [1067x546]	310 [141]	420 [191]	(3) 20x25 (6) 20x20 [508x635] [508x508]
17	44 [1118]	82 [2083]	16 [406]	9 [229]	64 [1626]	42x12 [1067x305]	42x21 1/2 [1067x546]	350 [159]	470 [214]	(12) 20x20 [508x508]

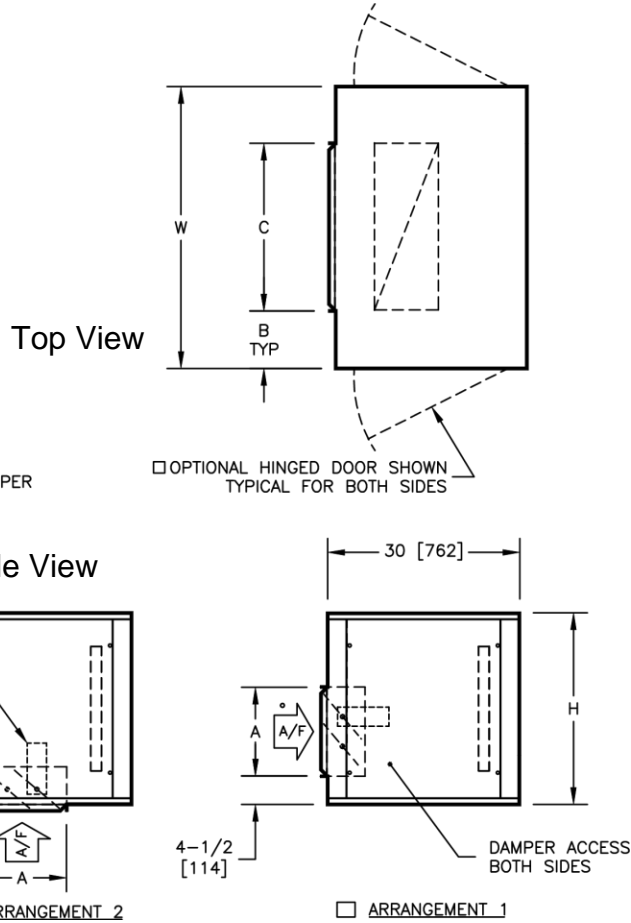
MRM

Medium Inlet Plenum with Flat Filters Module

Notes:

1. Duct collars are 1" [25] all around.
2. Damper is factory provided and installed as an option.
3. Optional damper actuator will be located on the inside of module on the same side as the control enclosure.
4. Optional hinged door is removable, but must be opened 90° for removal.

Available Filter Options: MERV Rating
 A. 2" [51mm] 30% pleated. 8



Right hand unit shown. All dimensions are inches [millimeters].

Unit Size	H	W	A	B	C	ACCESS PANEL H X W	WEIGHT		FILTER SIZES
							SINGLE WALL lbs [kg]	DOUBLE WALL lbs [kg]	
02	22 [559]	30 [762]	10 [254]	9 [229]	12 [305]	20x24 [508x610]	109 [49]	134 [61]	(1) 16x20 [406x508]
03	22 [559]	36 [914]	10 [254]	9 [229]	18 [457]	20x24 [508x610]	119 [54]	149 [68]	(1) 16x25 [406x635]
04	22 [559]	44 [1118]	10 [254]	10 [254]	24 [610]	20x24 [508x610]	135 [61]	170 [77]	(2) 16x20 [406x508]
06	30 [762]	44 [1118]	14 [356]	9 [229]	26 [660]	28x24 [711x610]	158 [72]	198 [90]	(2) 20x25 [508x635]
08	34 [864]	48 [1219]	14 [356]	6 [152]	36 [914]	32x24 [813x610]	183 [83]	228 [103]	(2) 20x25 [508x635]
10	34 [864]	58 [1473]	14 [356]	7 [178]	44 [1118]	32x24 [813x610]	208 [94]	258 [117]	(1) 16x25 (2) 20x25 [406x635] [508x635]
12	44 [1118]	66 [1676]	16 [406]	10 [254]	46 [1168]	42x24 [1067x610]	262 [119]	322 [146]	(4) 20x25 [508x635]
14	44 [1118]	70 [1778]	16 [406]	6 [152]	58 [1473]	42x24 [1067x610]	282 [128]	342 [155]	(8) 16x20 [406x508]
17	44 [1118]	82 [2083]	16 [406]	9 [229]	64 [1626]	42x24 [1067x610]	322 [146]	377 [171]	(6) 20x25 [508x635]

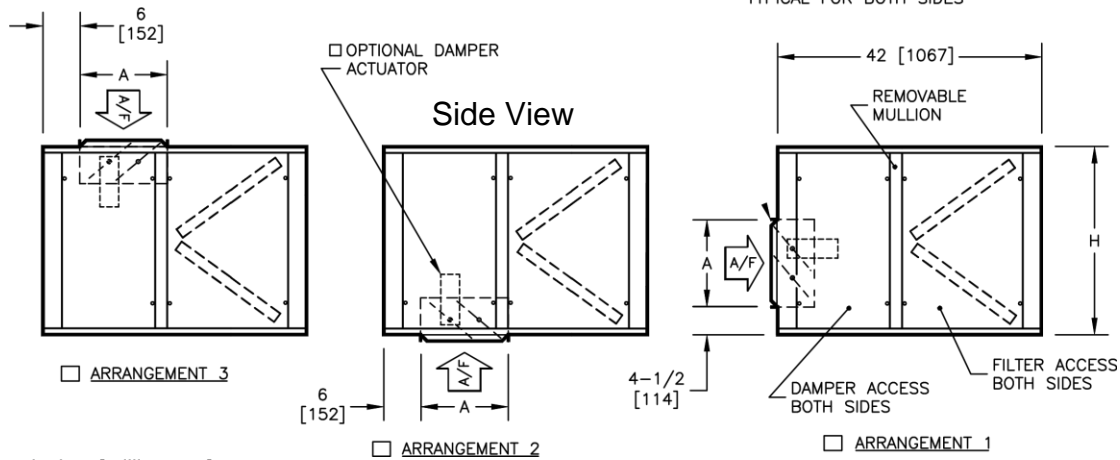
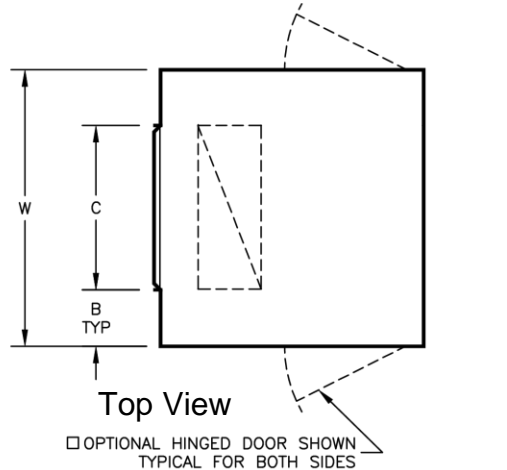
LRM

Large Inlet Plenum with V-Bank Filters Module

Notes:

1. Duct collars are 1" [25] all around.
2. Damper is factory provided and installed as an option.
3. Optional damper actuator will be located on the inside of module on the same side as the control enclosure.
4. Optional hinged door is removable, but must be opened 90° for removal.

Available Filter Options: MERV Rating
 A. 2" [51mm] 30% pleated. 8

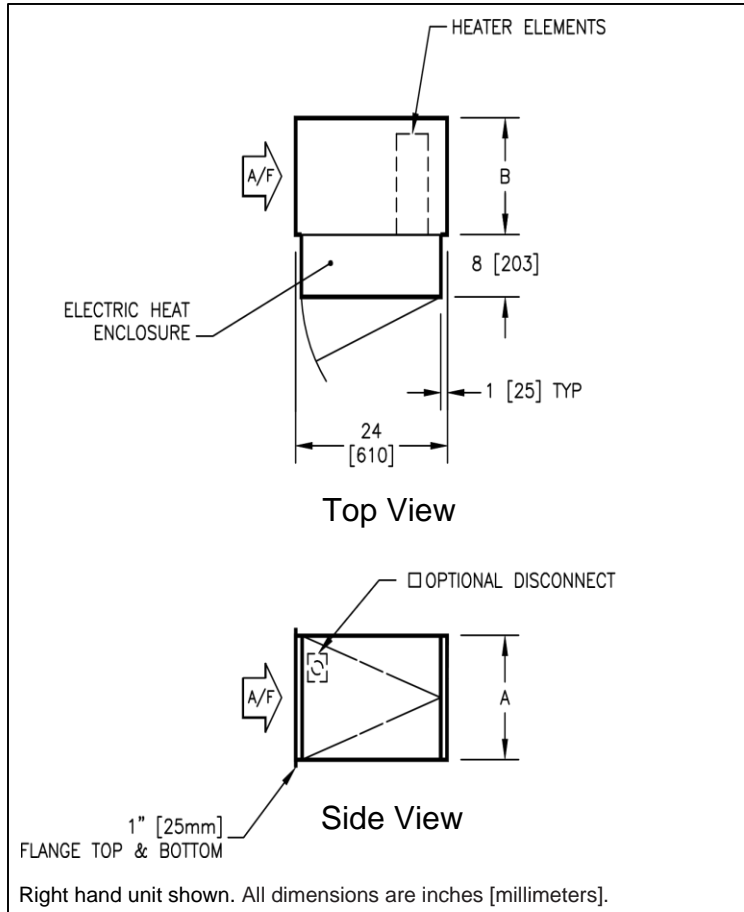


All dimensions are inches [millimeters].

Unit Size	H	W	A	B	C	ACCESS PANEL		WEIGHT		FILTER SIZES
						DAMPER H X W	FILTER H X W	SINGLE WALL lbs [kg]	DOUBLE WALL lbs [kg]	
02	22 [559]	30 [762]	10 [254]	9 [229]	12 [305]	20x12 [508x305]	20x21 1/2 [508x546]	129 [59]	169 [77]	(2) 16x20 [406x508]
03	22 [559]	36 [914]	10 [254]	9 [229]	18 [457]	20x12 [508x305]	20x21 1/2 [508x546]	144 [65]	189 [86]	(2) 16x25 [406x635]
04	22 [559]	44 [1118]	10 [254]	10 [254]	24 [610]	20x12 [508x305]	20x21 1/2 [508x546]	159 [72]	219 [99]	(2) 20x25 [508x635]
06	30 [762]	44 [1118]	14 [356]	9 [229]	26 [660]	28x12 [711x305]	28x21 1/2 [711x546]	208 [94]	248 [112]	(4) 20x20 [508x508]
08	34 [864]	48 [1219]	14 [356]	6 [152]	36 [914]	32x12 [813x305]	32x21 1/2 [813x546]	218 [99]	278 [126]	(2) 16x20 (2) 20x25 [406x508] [508x635]
10	34 [864]	58 [1473]	14 [356]	7 [178]	44 [1118]	32x12 [813x305]	32x21 1/2 [813x546]	233 [106]	313 [142]	(2) 16x20 (4) 20x20 [406x508] [508x508]
12	44 [1118]	66 [1676]	16 [406]	10 [254]	46 [1168]	42x12 [1067x305]	42x21 1/2 [1067x546]	277 [126]	377 [171]	(6) 20x25 [508x635]
14	44 [1118]	70 [1778]	16 [406]	6 [152]	58 [1473]	42x12 [1067x305]	42x21 1/2 [1067x546]	308 [140]	417 [189]	(3) 20x25 (6) 20x20 [508x635] [508x508]
17	44 [1118]	82 [2083]	16 [406]	9 [229]	64 [1626]	42x12 [1067x305]	42x21 1/2 [1067x546]	347 [157]	467 [212]	(12) 20x20 [508x508]

EHB

Electric Heat Blow-Thru Module



Unit Size	A	B	WEIGHT	
			SINGLE WALL lbs [kg]	DOUBLE WALL lbs [kg]
02	12 [305]	12 [305]	30 [14]	40 [18]
03	12 [305]	12 [305]	30 [14]	40 [18]
04	12 [305]	12 [305]	30 [14]	40 [18]
06	18 [457]	17 [432]	35 [16]	50 [23]
08	18 [457]	17 [432]	35 [16]	50 [23]
10	18 [457]	17 [432]	35 [16]	50 [23]
12	21 [533]	25 [635]	45 [20]	65 [30]
14	21 [533]	25 [635]	45 [20]	65 [30]
17	21 [533]	25 [635]	45 [20]	65 [30]

UNIT VOLTAGE AND PHASE		BLOW-THRU ELECTRIC HEAT																		
		Unit Size																		
		2		3		4		6		8		10		12		14		17		
		Min	Max	Min	Max	Min	Max	Min	Max	Min	Max	Min	Max	Min	Max	Min	Max	Min	Max	
Single Phase	115	kW	3	5	3	5	4	5												
		AMPs	26.1	43.5	26.1	43.5	34.8	43.5												
	208	kW	3	9	3	9	4	9	6	9	7	9								
		AMPs	14.4	43.3	14.4	43.3	19.2	43.3	28.8	43.3	33.7	43.3								
	230	kW	3	11	3	11	4	11	6.0	11	7	11	9	11						
		AMPs	13.0	47.8	13.0	47.8	17.4	47.8	26.1	47.8	30.4	47.8	39.1	47.8						
277	kW	3	13	3	13	4	13	6.0	13	7	13	9	13							
	AMPs	10.8	46.9	10.8	46.9	14.4	46.9	21.7	46.9	25.3	46.9	32.5	46.9							
Three Phase	208	kW	3	13	3	16	4	16	4.0	16	7	16	9	16	12	16	14	16		
		AMPs	8.3	36.1	8.3	44.4	11.1	44.4	11.1	44.4	19.4	44.4	25.0	44.4	33.3	44.4	38.9	44.4		
	230	kW	3	13	3	18	4	18	4.0	18	7	18	9	18	12	18	14	18	16	18
		AMPs	7.5	32.6	7.5	45.2	10.0	45.2	10.0	45.2	17.6	45.2	22.6	45.2	30.1	45.2	35.1	45.2	40.2	45.2
	460	kW	3	13	3	20	4	26	4.0	26	7	38	9	38	12	38	14	38	16	38
		AMPs	3.8	16.3	3.8	25.1	5.0	32.6	5.0	32.6	8.8	47.7	11.3	47.7	15.1	47.7	17.6	47.7	20.1	47.7
	575	kW	3	13	3	20	4	26	4.0	26	7	46	9	46	12	46	14	46	16	46
		AMPs	3.0	13.1	3.0	20.1	4.0	26.1	4.0	26.1	7.0	46.2	9.0	46.2	12.0	46.2	14.1	46.2	16.1	46.2

Notes:

1. Electric heat enclosure specified left or right with air to back, Standard control enclosure is right hand.
2. Blow thru heaters can have maximum two stages.
3. VFD controllers cannot be supplied with blow thru heaters.
4. Specific kW ratings are available within the ranges shown. Refer to selection program.
5. Heaters above 480V must utilize one time secondary limits only.

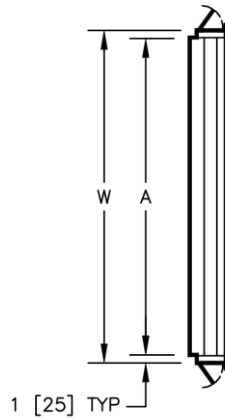
EFM

External Flat Filters Module

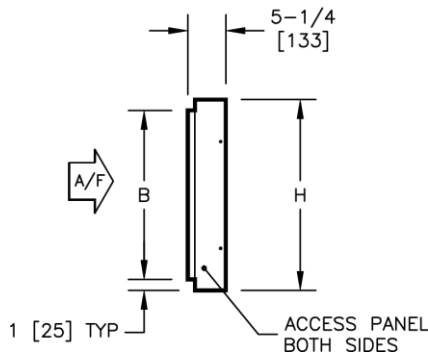
Notes:

1. Duct collars are 1" [25] all around.

Available Filter Options: MERV Rating
 A. 2" [51mm] 30% pleated. 8



Top View



Side View

Right hand unit shown. All dimensions are inches [millimeters].

Unit Size	H	W	A	B	ACCESS PANEL H X W	WEIGHT		FILTER SIZES
						SINGLE WALL lbs [kg]	DOUBLE WALL lbs [kg]	
02	17 3/8 [441]	28 [711]	26 [660]	15 3/8 [391]	17 3/8x4 [441x102]	20 [9]	25 [635]	(1) 16x20 [406x508]
03	17 3/8 [441]	34 [864]	32 [813]	15 3/8 [391]	17 3/8x4 [441x102]	20 [9]	25 [635]	(1) 16x25 [406x635]
04	17 3/8 [441]	42 [1069]	40 [1016]	15 3/8 [391]	17 3/8x4 [441x102]	25 [11]	30 [762]	(2) 16x20 [406x508]
06	26 3/8 [670]	42 [1069]	40 [1016]	24 3/8 [619]	26 3/8x4 [670x102]	30 [14]	37 [940]	(2) 20x25 [508x635]
08	26 3/8 [670]	46 [1168]	44 [1118]	24 3/8 [619]	26 3/8x4 [670x102]	35 [16]	42 [1067]	(2) 20x25 [508x635]
10	26 3/8 [670]	56 [1422]	54 [1372]	24 3/8 [619]	26 3/8x4 [670x102]	35 [16]	42 [1067]	(1) 16x25 (2) 20x25 [406x635] [508x635]
12	41 3/16 [1046]	64 [1626]	62 [1575]	39 3/16 [995]	41 3/16x4 [1046x102]	60 [27]	69 [1753]	(4) 20x25 [508x635]
14	41 3/16 [1046]	68 [1727]	66 [1676]	39 3/16 [995]	41 3/16x4 [1046x102]	60 [27]	69 [1753]	(8) 16x20 [406x508]
17	41 3/16 [1046]	80 [2032]	78 [1981]	39 3/16 [995]	41 3/16x4 [1046x102]	65 [30]	74 [1880]	(6) 20x25 [508x635]

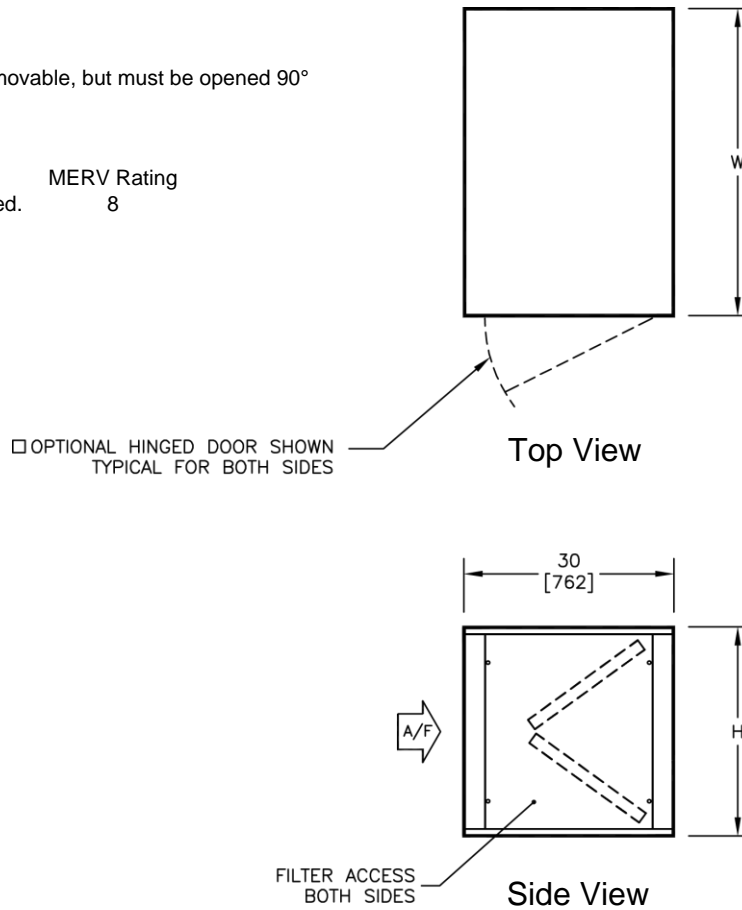
MVM

Medium V-Bank Filters

Notes:

1. Optional hinged door is removable, but must be opened 90° for removal.

- Available Filter Options: MERV Rating
- A. 2" [51mm] 30% pleated. 8

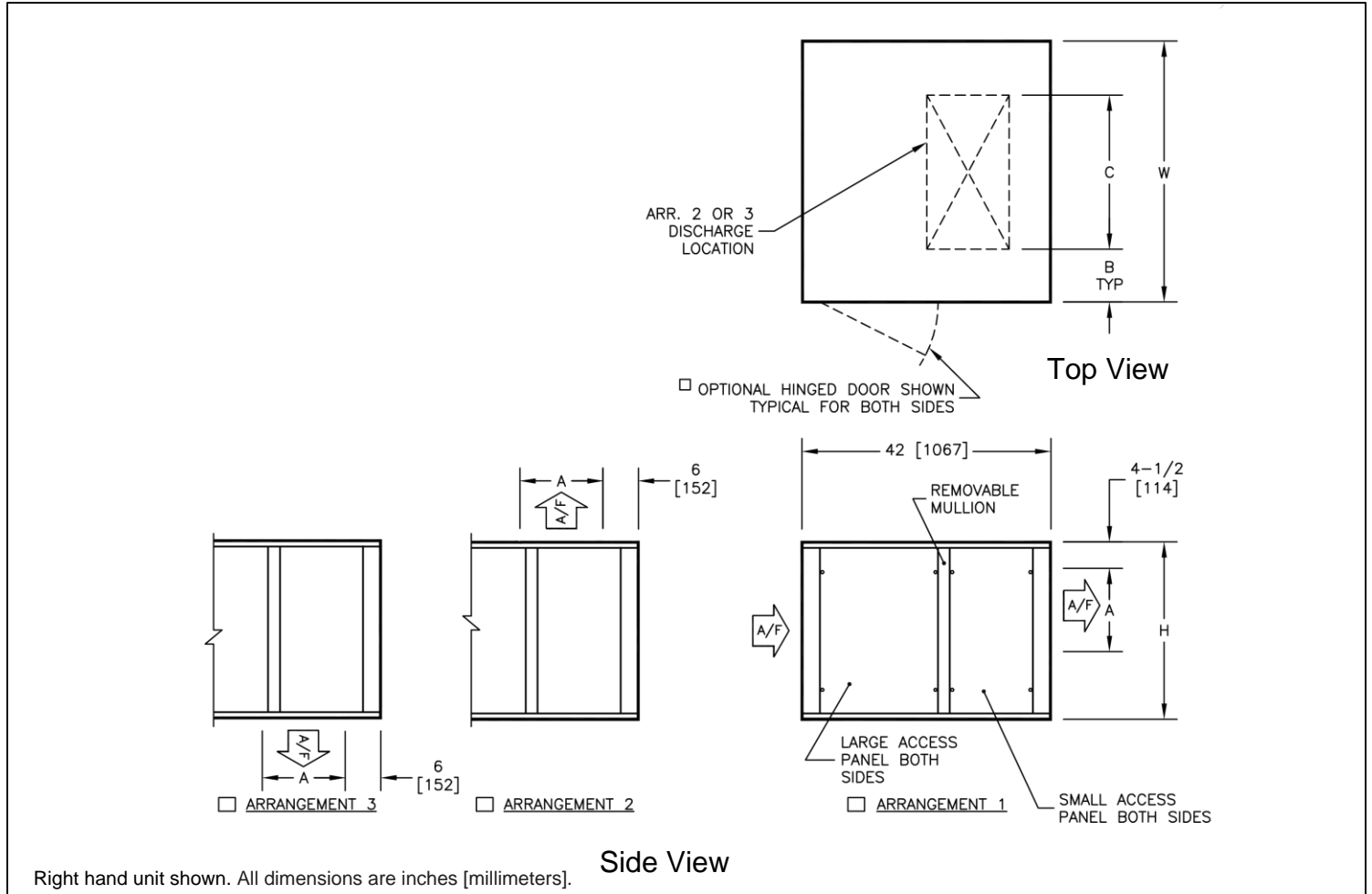


Right hand unit shown. All dimensions are inches [millimeters].

Unit Size	H	W	ACCESS PANEL H X W	WEIGHT		FILTER SIZES
				SINGLE WALL lbs [kg]	DOUBLE WALL lbs [kg]	
02	22 [559]	30 [762]	20x24 [508x610]	85 [39]	110 [50]	(2) 16x20 [406x508]
03	22 [559]	36 [914]	20x24 [508x610]	90 [41]	120 [55]	(2) 16x25 [406x635]
04	22 [559]	44 [1118]	20x24 [508x610]	105 [48]	140 [64]	(2) 20x25 [508x635]
06	30 [762]	44 [1118]	28x24 [711x610]	110 [50]	150 [69]	(4) 20x20 [508x508]
08	34 [864]	48 [1219]	32x24 [813x610]	125 [57]	170 [78]	(2) 16x20 (2) 20x25 [406x508] [508x635]
10	34 [864]	58 [1473]	32x24 [813x610]	135 [62]	185 [84]	(2) 16x20 (4) 20x20 [406x508] [508x508]
12	44 [1118]	66 [1676]	42x24 [1067x610]	160 [73]	220 [100]	(6) 20x25 [508x635]
14	44 [1118]	70 [1778]	42x24 [1067x610]	190 [87]	250 [114]	(3) 20x25 (6) 20x20 [508x635] [508x508]
17	44 [1118]	82 [2083]	42x24 [1067x610]	220 [100]	275 [125]	(12) 20x20 [508x508]

LPM

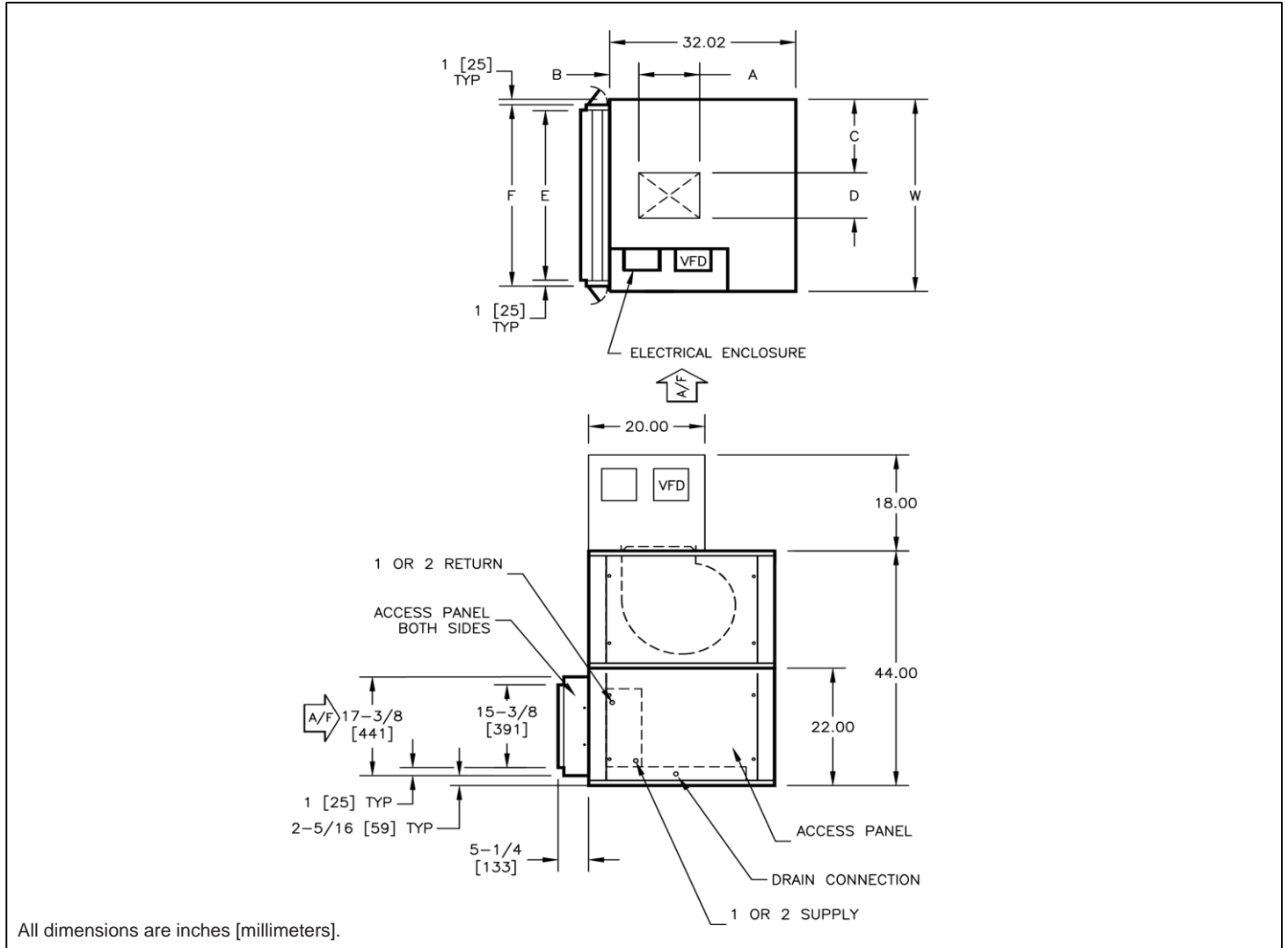
Large Discharge Plenum



Unit Size	H	W	A	B	C	ACCESS PANEL		WEIGHT	
						SMALL H X W	LARGE H X W	SINGLE WALL lbs [kg]	DOUBLE WALL lbs [kg]
02	22 [559]	30 [762]	10 [254]	9 [229]	12 [305]	20x12 [508x305]	20x21 [508x533]	90 [41]	130 [59]
03	22 [559]	36 [914]	10 [254]	9 [229]	18 [457]	20x12 [508x305]	20x21 [508x533]	105 [48]	150 [68]
04	22 [559]	44 [1118]	10 [254]	10 [254]	24 [610]	20x12 [508x305]	20x21 [508x533]	110 [50]	170 [77]
06	30 [762]	44 [1118]	14 [356]	9 [229]	26 [660]	28x12 [711x305]	28x21 [711x533]	150 [68]	190 [86]
08	34 [864]	48 [1219]	14 [356]	6 [152]	36 [914]	32x12 [813x305]	32x12 [813x305]	155 [70]	215 [98]
10	34 [864]	58 [1473]	14 [356]	7 [178]	44 [1118]	32x12 [813x305]	32x12 [813x305]	160 [73]	240 [109]
12	44 [1118]	66 [1676]	16 [406]	10 [254]	46 [1168]	42x12 [1067x305]	42x21 [1067x533]	190 [86]	290 [132]
14	44 [1118]	70 [1778]	16 [406]	6 [152]	58 [1473]	42x12 [1067x305]	42x21 [1067x533]	205 [93]	300 [136]
17	44 [1118]	82 [2083]	16 [406]	9 [229]	64 [1626]	42x12 [1067x305]	42x21 [1067x533]	220 [100]	335 [152]

EFM

With VCM, VFM and Control Enclosure



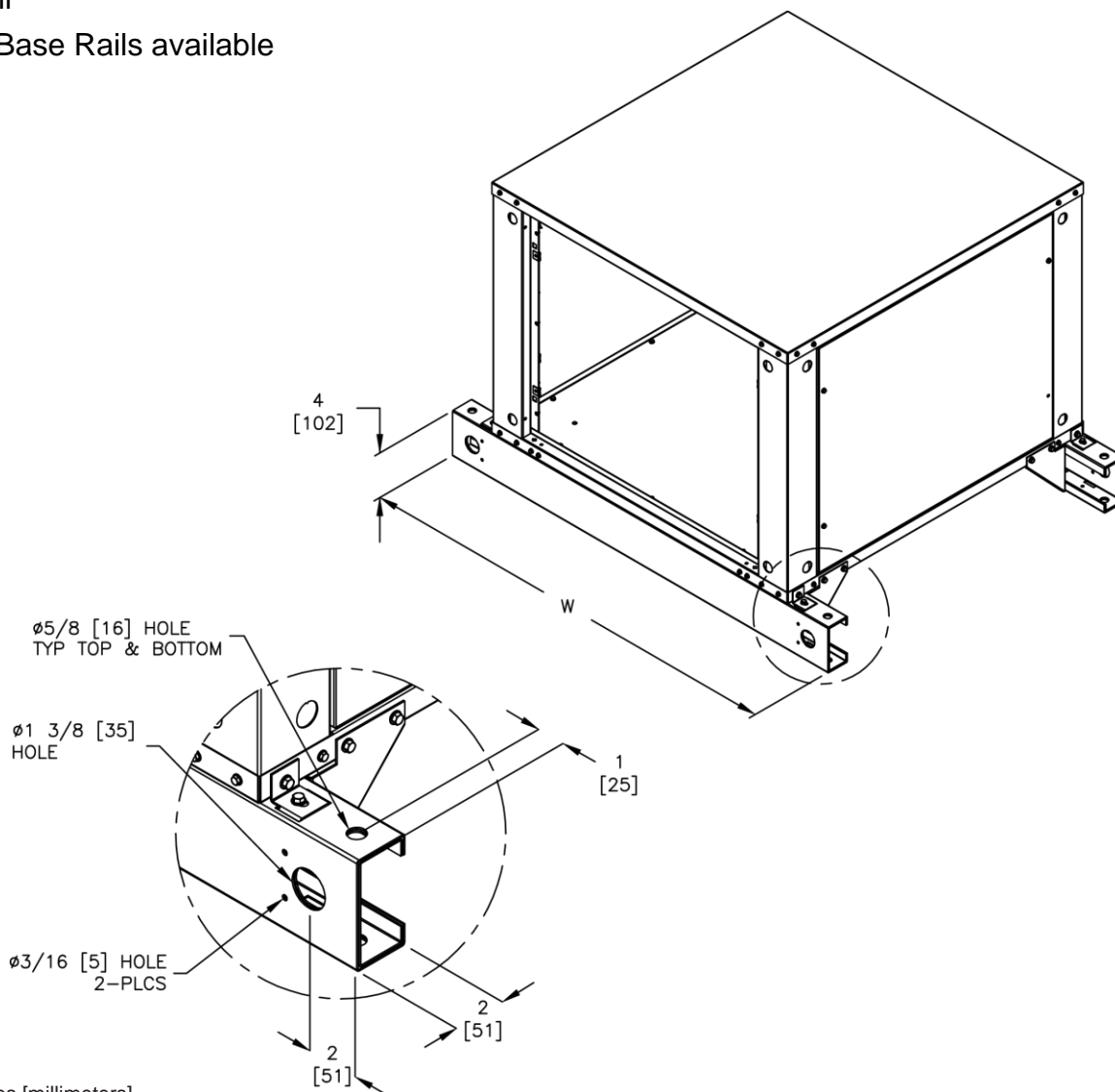
Unit Size	A	B	C	D	E	F	W	ACCESS PANEL H X W	WEIGHT	
									SINGLE WALL lbs [kg]	DOUBLE WALL lbs [kg]
03	10 ½ [267]	5 [127]	13 ¾ [349]	8 ½ [216]	32 [813]	34 [864]	36 [914]	20x26 [508x660]	220 [99]	285 [129]
04	11 5/8 [295]	5 [127]	17 1/16 [433]	9 7/8 [251]	40 [1016]	42 [1069]	44 [1118]	20x26 [508x660]	245 [111]	300 [136]

Notes:

1. Motor/drive location specified left or right with air to back. Standard control enclosure location matches motor/drive position.
2. Coil and drain connections specified left or right with air to back.
3. Panel with coil penetrations is not removable.
4. One coil shown. Each coil shall have a supply and return connection.
5. Weight does not include motor or coil weight.
6. Alternate control enclosure and VFD locations are subjected to compliance with NEC 2002 Article 110.26 and are limited. Consult Titus for available alternate location by application.
7. Optional VFD will be located on the same side of the unit as control enclosure. VFD shall be mounted adjacent to or close to control enclosure as possible, depending upon unit size.

Base Rail

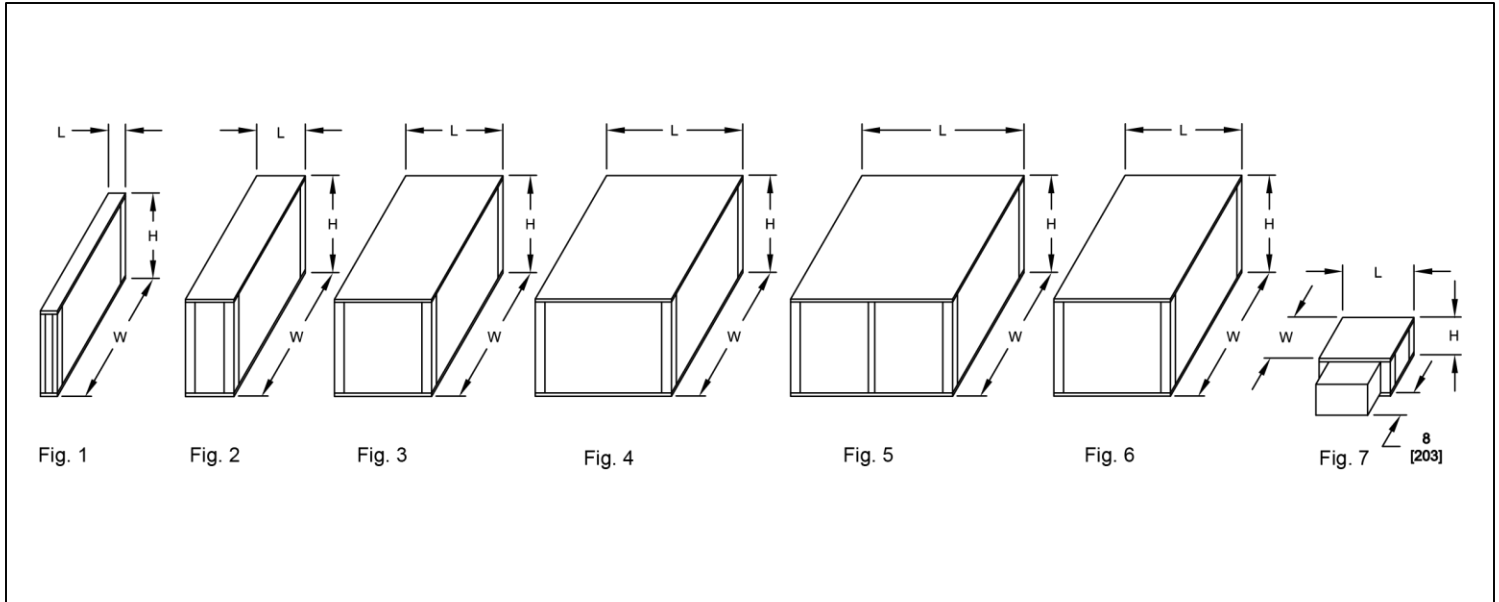
- 4" Base Rail
- Optional 6" Base Rails available



All dimensions are inches [millimeters].

Unit Size	W	WEIGHT lbs [kg]
02	38 [965]	20 [9]
03	44 [1118]	22 [10]
04	52 [1321]	24 [11]
06	52 [1321]	24 [11]
08	56 [1422]	26 [12]
10	66 [1676]	29 [13]
12	74 [1880]	31 [14]
14	78 [1981]	32 [15]
17	90 [2286]	36 [17]

Unit Configuration



UNIT CONFIGURATION (IN DIRECTION OF AIRFLOW)

		UNIT CONFIGURATION (IN DIRECTION OF AIRFLOW)										
		Upper Deck - B										
		Lower Deck - A										
		Position	1	2	3	4	5	6	7	8	9	10
AMI- Module Size		Dim.	02	03	04	06	08	10	12	14	17	
Fig. 1	EFM External Flat Filters (2")	H - in (m m)	17-3/8 (441)	17-3/8 (441)	17-3/8 (441)	26-3/8 (670)	26-3/8 (670)	26-3/8 (670)	41-3/16 (1046)	41-3/16 (1046)	41-3/16 (1046)	
		W - in (m m)	28 (711)	34 (864)	42 (1069)	42 (1069)	46 (1168)	56 (1422)	64 (1626)	68 (1727)	80 (2032)	
		L - in (m m)	5-1/4 (133)	5-1/4 (133)	5-1/4 (133)	5-1/4 (133)	5-1/4 (133)	5-1/4 (133)	5-1/4 (133)	5-1/4 (133)	5-1/4 (133)	5-1/4 (133)
Fig. 2	SAM SCM SFM Small Access Small Coil Small Flat Filters (2" and/or 4" Cartridge)	H - in (m m)	22 (559)	22 (559)	22 (559)	30 (762)	34 (864)	34 (864)	44 (1118)	44 (1118)	44 (1118)	
		W - in (m m)	30 (762)	36 (914)	44 (1118)	44 (1118)	48 (1219)	58 (1473)	66 (1676)	70 (1778)	82 (2083)	
		L - in (m m)	15 (381)	15 (381)	15 (381)	15 (381)	15 (381)	15 (381)	15 (381)	15 (381)	15 (381)	15 (381)
Fig. 3	MAM MCM MFM MIM MMM MRM MVM Medium Access Medium Coil Med. INTELLITRAC Mix. Box w/Flat Filters (2") Med. INTELLITRAC Inlet Plenum w/Flat Filters (2") Medium Mixing Box with Flat Filters (2") Medium Inlet Plenum with Flat Filters (2") Medium V-Bank Filters (2")	H - in (m m)	22 (559)	22 (559)	22 (559)	30 (762)	34 (864)	34 (864)	44 (1118)	44 (1118)	44 (1118)	
		W - in (m m)	30 (762)	36 (914)	44 (1118)	44 (1118)	48 (1219)	58 (1473)	66 (1676)	70 (1778)	82 (2083)	
		L - in (m m)	30 (762)	30 (762)	30 (762)	30 (762)	30 (762)	30 (762)	30 (762)	30 (762)	30 (762)	30 (762)
Fig. 4	HFM HPM VCM VFM Horizontal FC Fan Horizontal Plug Fan Vertical Coil Vertical FC Fan*	H - in (m m)	22 (559)	22 (559)	22 (559)	30 (762)	34 (864)	34 (864)	44 (1118)	44 (1118)	44 (1118)	
		W - in (m m)	30 (762)	36 (914)	44 (1118)	44 (1118)	48 (1219)	58 (1473)	66 (1676)	70 (1778)	82 (2083)	
		L - in (m m)	32 (813)	32 (813)	32 (813)	36 (914)	36 (914)	36 (914)	40 (1016)	40 (1016)	40 (1016)	
Fig. 5	LAM LFM LIM LMM LRM LPM Large Access Lg. INTELLITRAC Mix. Box w/V-Bank Filters (2") Lg. INTELLITRAC Inlet Plenum w/V-Bank Filters (2") Large Mixing Box with V-Bank Filters (2") Large Inlet Plenum with V-Bank Filters (2") Large Discharge Plenum	H - in (m m)	22 (559)	22 (559)	22 (559)	30 (762)	34 (864)	34 (864)	44 (1118)	44 (1118)	44 (1118)	
		W - in (m m)	30 (762)	36 (914)	44 (1118)	44 (1118)	48 (1219)	58 (1473)	66 (1676)	70 (1778)	82 (2083)	
		L - in (m m)	42 (1067)	42 (1067)	42 (1067)	42 (1067)	42 (1067)	42 (1067)	42 (1067)	42 (1067)	42 (1067)	42 (1067)
Fig. 6	FCM FC Fan and Coil Combination (Horizontal Only)	H - in (m m)	22 (559)	22 (559)	22 (559)	30 (762)	34 (864)	34 (864)	44 (1118)	44 (1118)	44 (1118)	
		W - in (m m)	30 (762)	36 (914)	44 (1118)	44 (1118)	48 (1219)	58 (1473)	66 (1676)	70 (1778)	82 (2083)	
Fig. 7	EHB Electric Heat Blow Thru	H - in (m m)	13-1/2 (343)	13-1/2 (343)	13-1/2 (343)	18 (457)	18 (457)	18 (457)	21 (533)	21 (533)	21 (533)	
		W - in (m m)	11-1/2 (292)	11-1/2 (292)	11-1/2 (292)	17 (432)	17 (432)	17 (432)	24 (610)	24 (610)	24 (610)	
		L - in (m m)	22 (559)	22 (559)	22 (559)	22 (559)	22 (559)	22 (559)	22 (559)	22 (559)	22 (559)	

Notes:

1. All dimensions are + 1/4" (6mm). Metric values are soft conversions.
2. Section images are for identification of unit configuration only. See individual section submittal drawings at www.titus-hvac.com for details.
3. Certain configuration rules apply; see catalog and selection program for details.
4. All data subject to change without notice.

STANDARD FEATURES**Construction**

- Modular design facilitates retrofit
- Galvanized steel cabinet construction
- 1" thick fiberglass insulation, glued and pinned in place
- Gasketed, removable access panels sized for easy handling
- Left and right hand arrangement
- Access panels on all sections

Fan Assembly

- Single forward curved sections
- Statically and dynamically balanced
- Solid steel shafting
- Ball bearings with a minimum design average life (L50) of 100,000 hours
- Fan decks with internal vibration isolation

Fan Motor and Drive

- Single speed ODP motors
- 1750 RPM single speed, 60 Hertz
- Single phase motors with inherent thermal protection
- Three phase motors
- Standard cross section "V-belt" drive with 1.2 service factor
- Adjustable pitch motor pulley and fixed pitch blower pulley

Coils

- 1/2" O.D. seamless copper tubes
- G60 steel coil casting
- Collard aluminum fins
- Manual air vent plug on all water coils
- Copper ODM sweat connections
- 300 PSIG working pressure at 200° F
- Copper ODM sweat connections
- 0.016" tube wall on water and evaporator coils
- 0.025" tube wall on steam coil

Filters and Filter Rack

- Hinged side access flat filter rack
- 2" pleated filters (30%)

Electrical

- Fan motor wired and terminated to junction box
- All units cETL listed in compliance with
- UL/ANSI Standard 1995

OPTIONAL FEATURES**Construction**

- IAQ (sloped) stainless steel drain pan with 1" MPT galvanized pipe outlet
- Galvanized steel drain pan
- External rubber-in-shear or spring type vibration isolators, hangers or floor mount
- Fan discharge arrangements
- Scrim reinforced foil faced insulation
- Hinged access panels with lift and turn fasteners
- Base rails with rigging slots factory assembled and installed
- Auxiliary (secondary) drain connections

Fan Motor and Drive

- High efficiency motors
- TEFC motors

Coils

- 3, 4 and 6 row chilled water or DX coils
- 1 and 2 row hot water or standard steam coils
- Heating coil in preheat or reheat position
- Coil connections opposite handing
- Stainless steel coil casings
- Automatic air vents on water coils
- Heat pump compatible cooling coils
- 0.025" tube wall thickness

Filters

- 2" pleated filter
- Spare throwaway or pleated filters
- High efficiency filter rack with 2" and 4" filters

Inlet Damper Section

- Factory assembled and installed
- Heavy gauge galvanized steel formed blade dampers
- Low leak dampers with extruded vinyl blade seals and flexible metal jamb seals
- Parallel blade operation
- Interconnecting damper linkage

Electrical

- Motor wiring on conduit
- Motor starter (contactor with overload for three phase; contactor for single phase), factory installed (mounted and wired)
- Door interlocking disconnect switch (non-fused)
- Hand off auto switch (HOA)
- Main fusing

Electric Heat Section

- Factory mounted electric heater with single point power connection, cETL listed as an assembly (see page 8)